

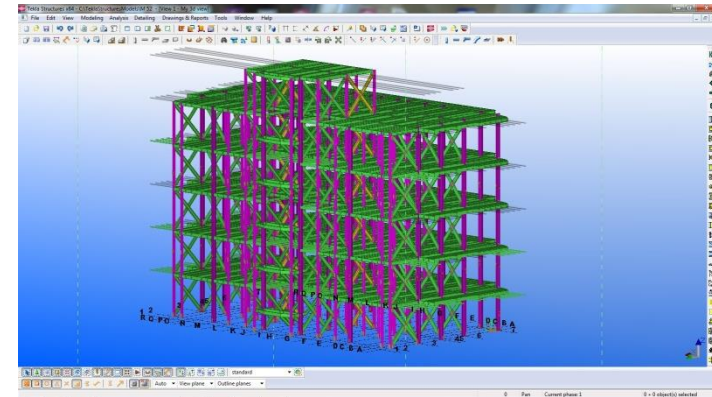
Samesor PreFab Superior

Samesor® PreFab Superior

Samesor® PreFab Superior

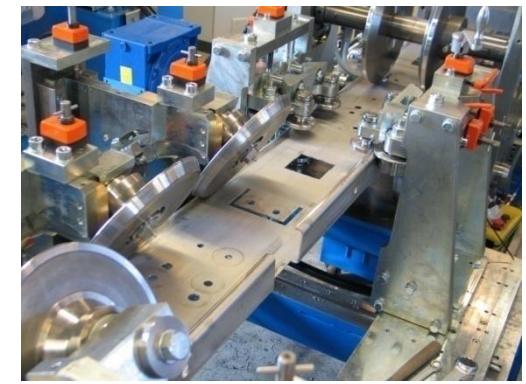
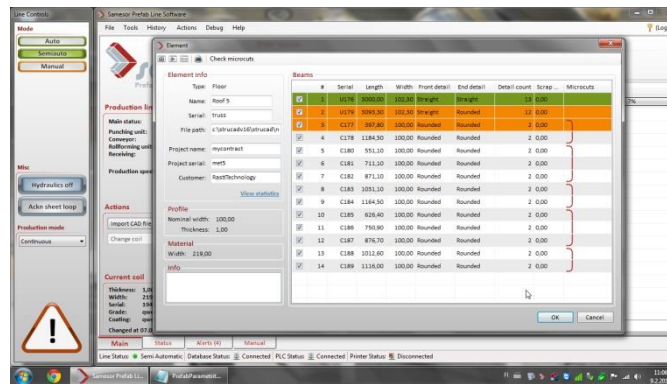
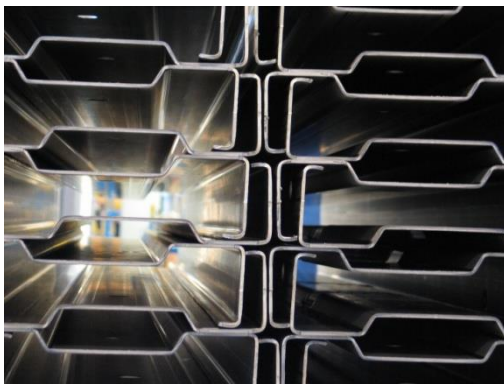
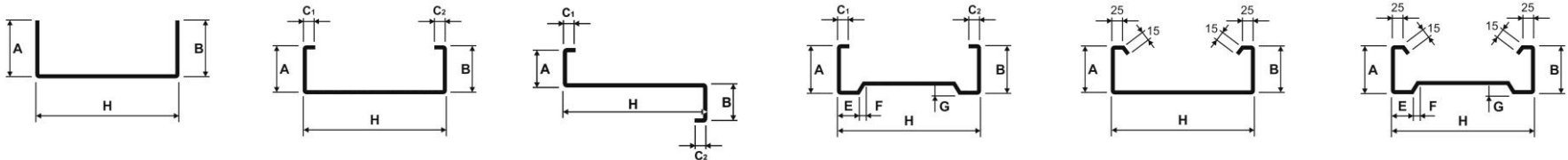
All-round solution for Steel Frame & Purlin production

- Prefabricated members and frames for multi-storey constructions like residential and commercial buildings
- Prefabricated purlins and structures for industrial buildings like halls and warehouses
- Prefabricated framing elements for other needs in building construction



Samesor® PreFab Superior

- **C, U, Z and Sigma profiles**
- **Detailed members** for structures, elements and frames.
- **Fully automated** production
- **Integrated 3D-Modelling & CAD-CAM** production



Samesor[®] PreFab Superior

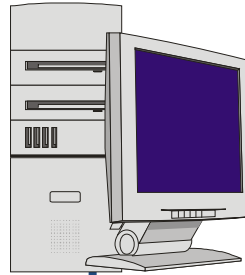
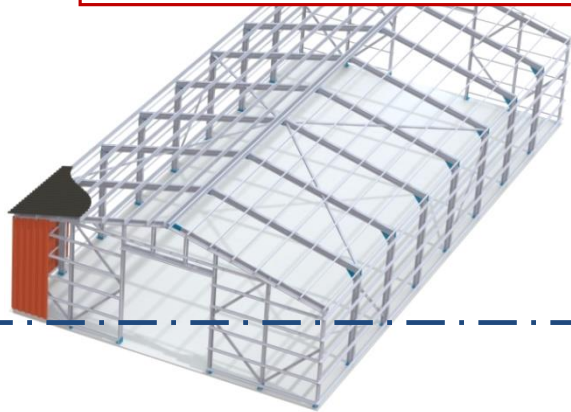
- **Framing production:** processing **prefabricated profile pairs** from the same sheet width for a CAD modelled Steel Frame in assembly or package order
- **Purlin production:** processing profiles in traditional way



Samesor® PreFab Superior

From design to manufacturing

Building & Structure design
(Design engineer workstation)



SAMESOR CAD - CAM

Commercial 3D Modelling Software* running on
Customer's Workstation (* e.g. TEKLA, Vertex ...)



Samesor PreFab Superior Production Line

LINE CONTROL WORKSTATION

Line control / Order queue handling /
Interfacing to design workstation / Data
storing

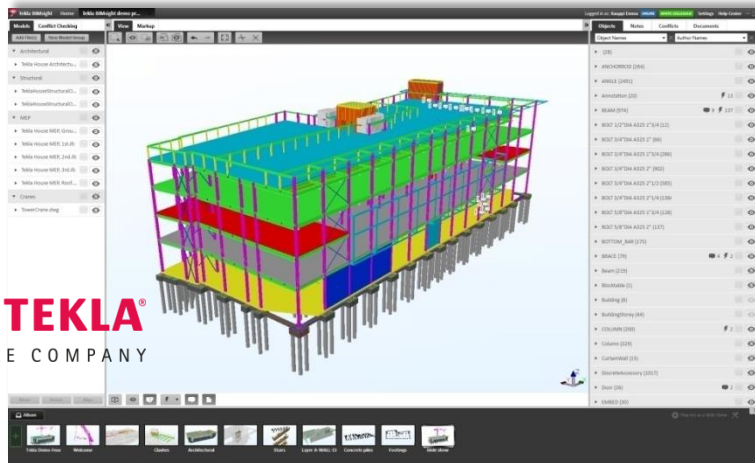


UNIT CONTROL: PLC Control to
control machine functions



Machine I/O, Motors, Valves,
Sensors, etc.

Samesor® PreFab Superior



3D Modelling Software

Design

- Tools for creating cold-formed structures
- Tools for creating of walls, floors, trusses, joists, rafters, purlin systems, ...

Detailing

- Wide range of connection macros, specially for cold-formed profiles
- Connection design between profiles, connections between elements, detailing for holes / tabs / cups / profile head / ...
- Tools for creating customized connections for different profiles and for different materials

Integration

- Interfacing possibilities to different programs for e.g. analyzing structures or making the architectural design

Samesor® PreFab Superior



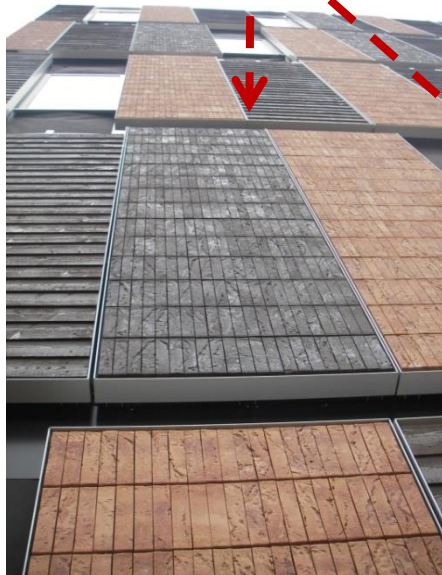
PreFab Superior = Multi-storey buildings

Samesor® PreFab Superior



PreFab Superior = Industrial buildings

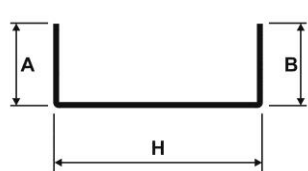
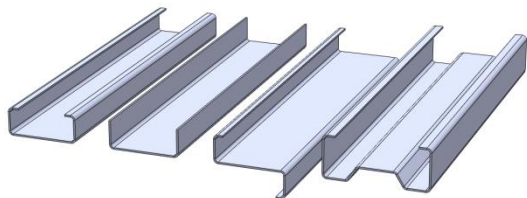
Samesor® PreFab Superior



PreFab Superior = Commercial buildings

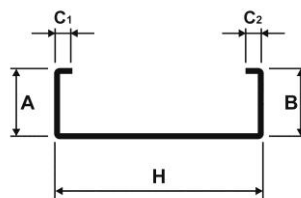
Samesor® PreFab Superior

Purlin / profile types:



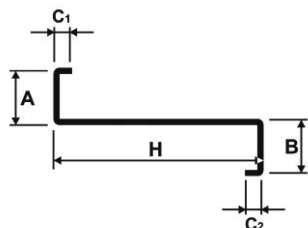
H = 100 - 450 mm
A = 50 - 100 mm
B = 50 - 100 mm
T = 1.0 - 4.0 mm

U-PROFILE



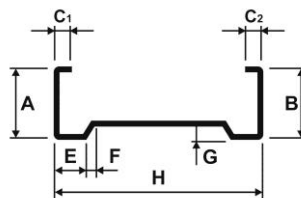
H = 100 - 450 mm
A = 50 - 100 mm
B = 50 - 100 mm
C¹ / C² = 15 - 30 mm
T = 1.0 - 4.0 mm

C-PROFILE



H = 100 - 450 mm
A = 50 - 100 mm
B = 50 - 100 mm
C¹ / C² = 15 - 30 mm
T = 1.0 - 4.0 mm

Z-PROFILE



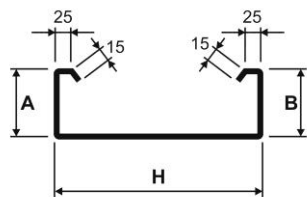
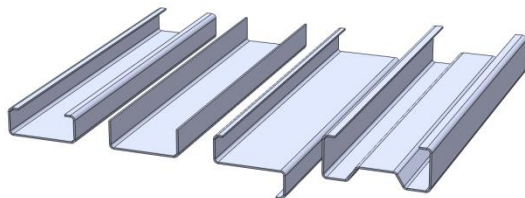
H = 180 - 450 mm
A = 50 - 100 mm
B = 50 - 100 mm
C¹ / C² = 15 - 30 mm
G = 25 mm
F = 15 mm
T = 1.0 - 4.0 mm

SIGMA PROFILE



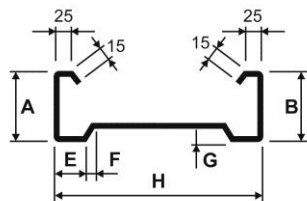
Samesor® PreFab Superior

Purlin / profile types:



H = 100 - 450 mm
A=B = 85 - 100 mm
T = 1.0 - 4.0 mm
Lip = 15+25 mm

C+ -PROFILE (C with DOUBLE LIP)



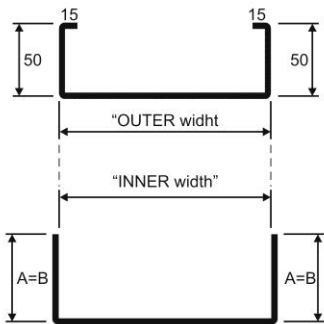
H = 180 - 450 mm
A=B = 85 - 100 mm
T = 1.0 - 4.0 mm
G = 25 mm , F = 15 mm
Lip = 15+25 mm

SIGMA+ -PROFILE (SIGMA with DOUBLE LIP)



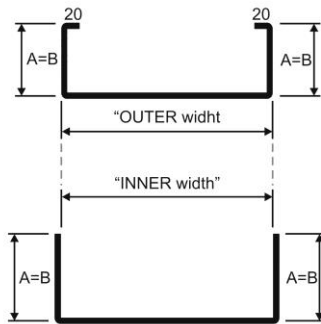
Samesor® PreFab Superior

Profile pairs (produced from the same sheet width)



C – U

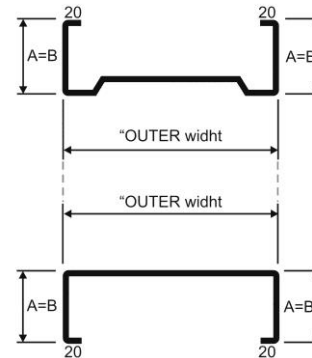
H = 100 – 450; T = 1.0 – 2.0;
A, B = C50 / U ~60



C – U (heavy-duty)

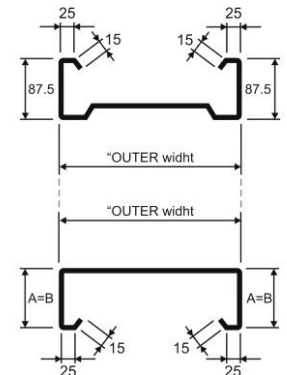
H = 150 – 450; T = 2.0 – 4.0;
A, B = C60-80 / U~80-100;

Wall frames, floor frames, trusses, ...



C - SIGMA

H = 180 – 450; T = 2.0 – 4.0;
A, B = Sigma 60-80 / C ~70-90



C+ - SIGMA+

H = 200 – 450; T = 2.0 – 4.0;
A, B = Sigma 87.5 / C ~100

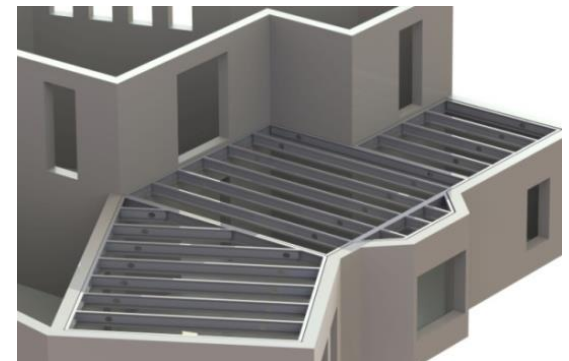
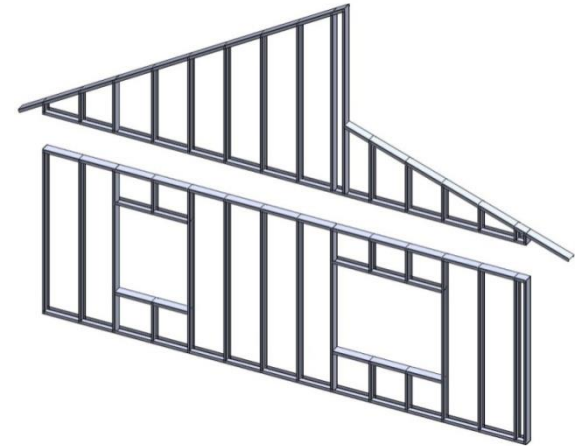
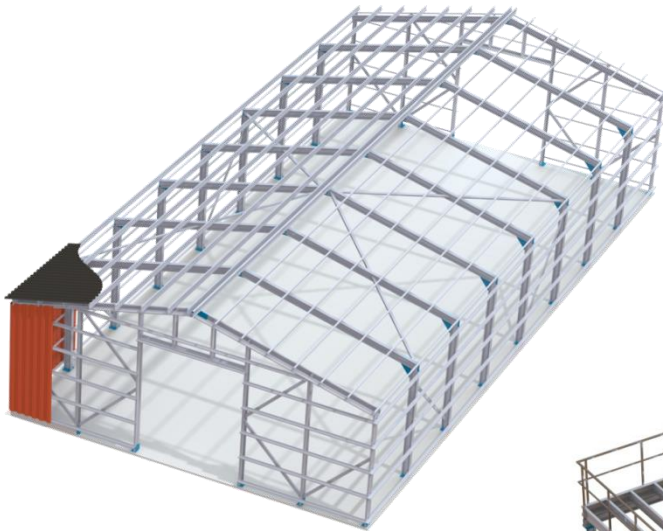
Primary and secondary structures.
Heavy-duty wall frames, floor frames, ...

Samesor® PreFab Superior

Members, elements and structures

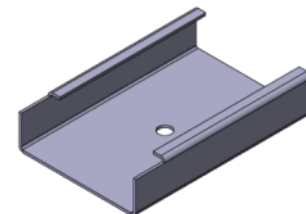
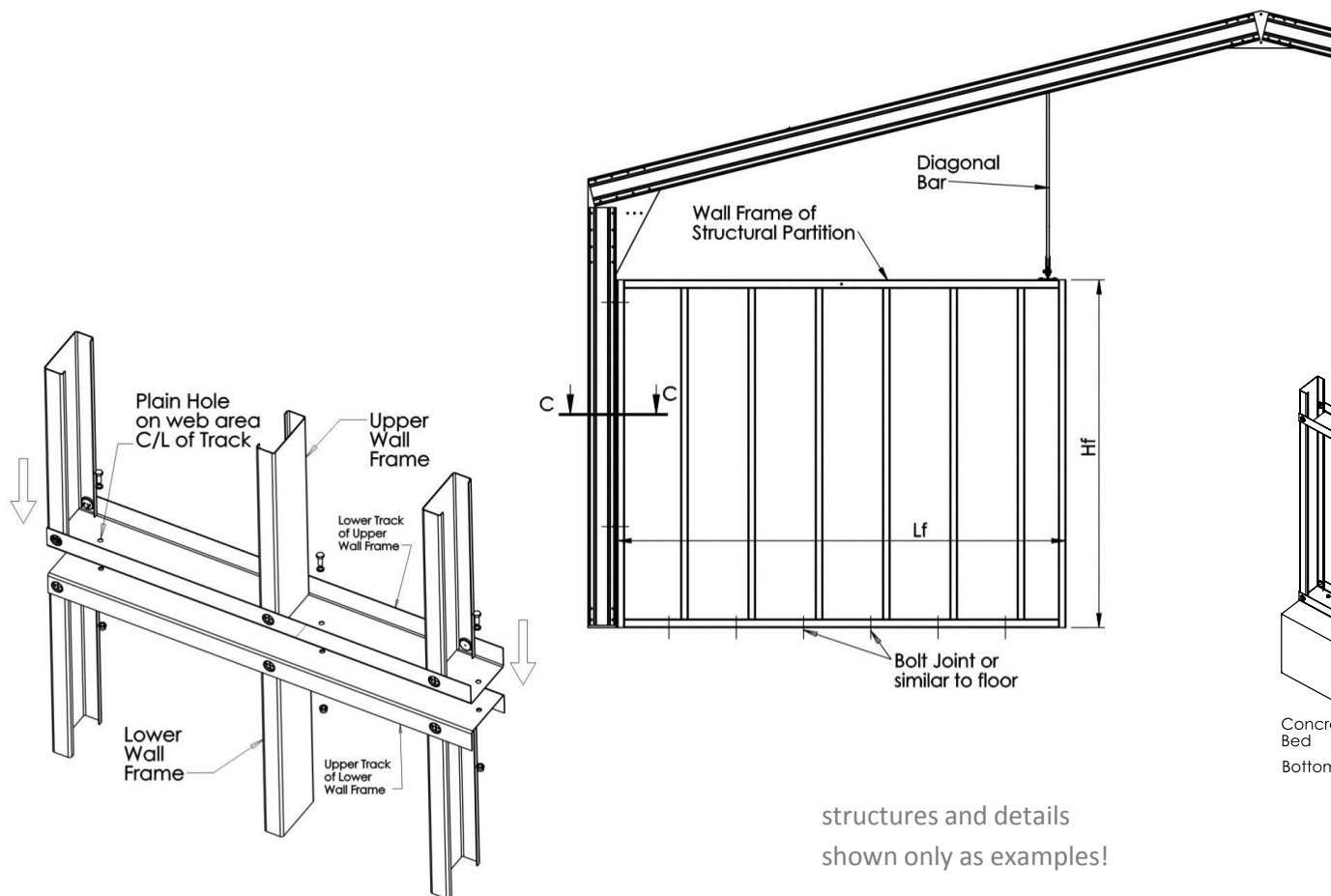
structures and details
shown only as examples!

- for MULTI-STOREY BUILDINGS
- for INDUSTRIAL BUILDINGS
- for BUILDING CONSTRUCTION needs



Samesor® PreFab Superior

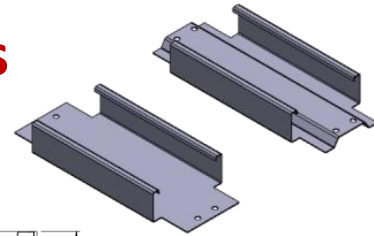
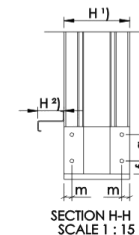
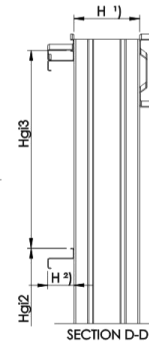
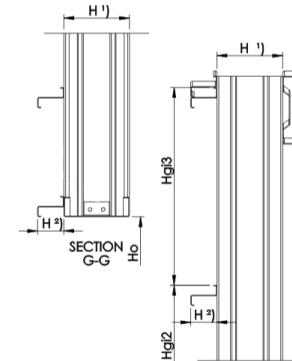
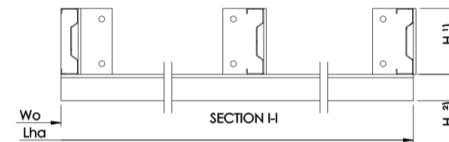
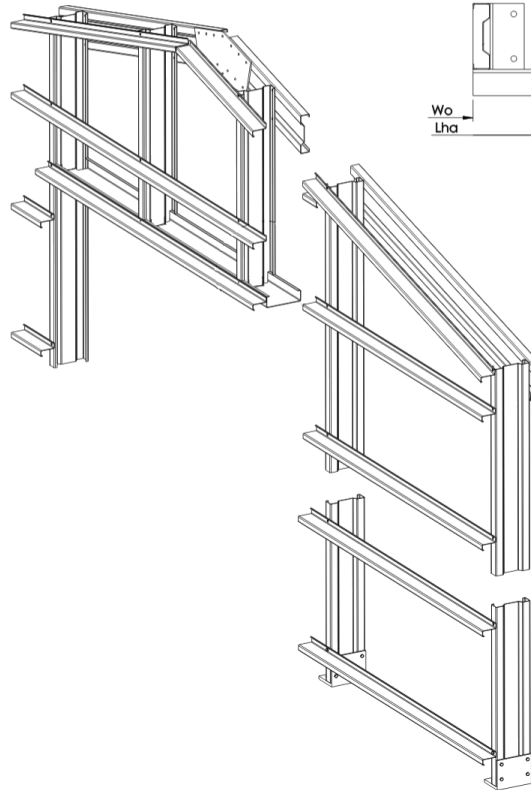
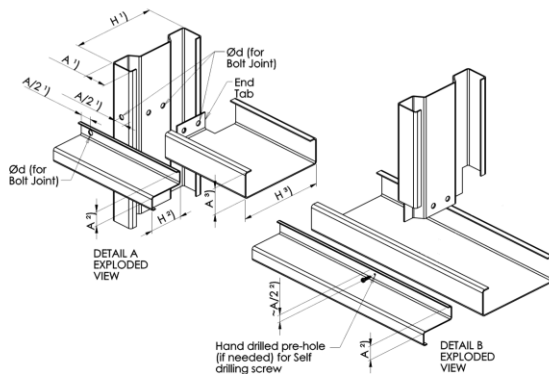
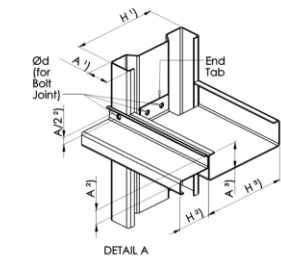
Some samples of detailing & structures



structures and details
shown only as examples!

Samesor® PreFab Superior

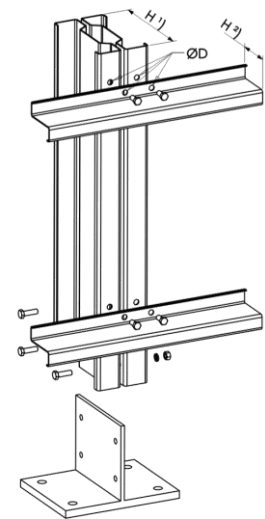
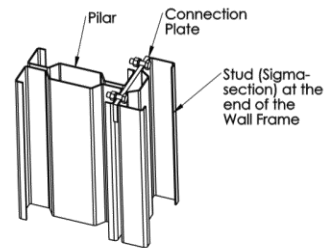
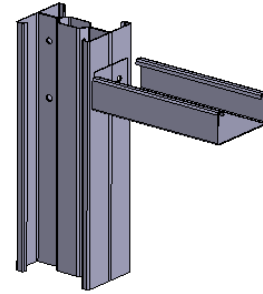
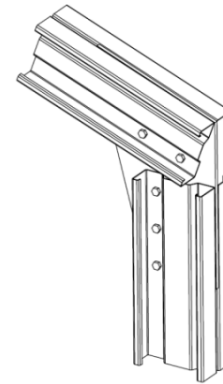
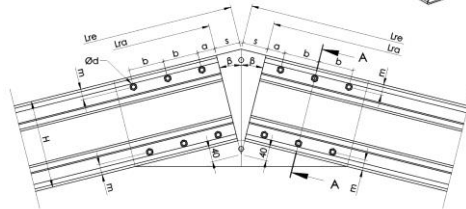
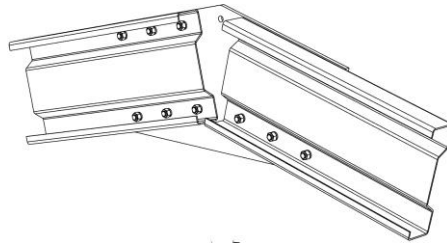
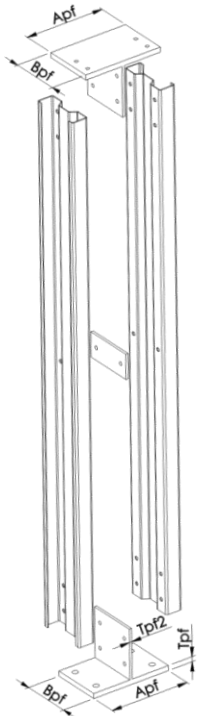
Some samples of detailing & structures



structures and details
shown only as examples!

Samesor® PreFab Superior

Some samples of detailing & structures



structures and details
shown only as examples!

Line layout (shown as a sample, not as a specification)

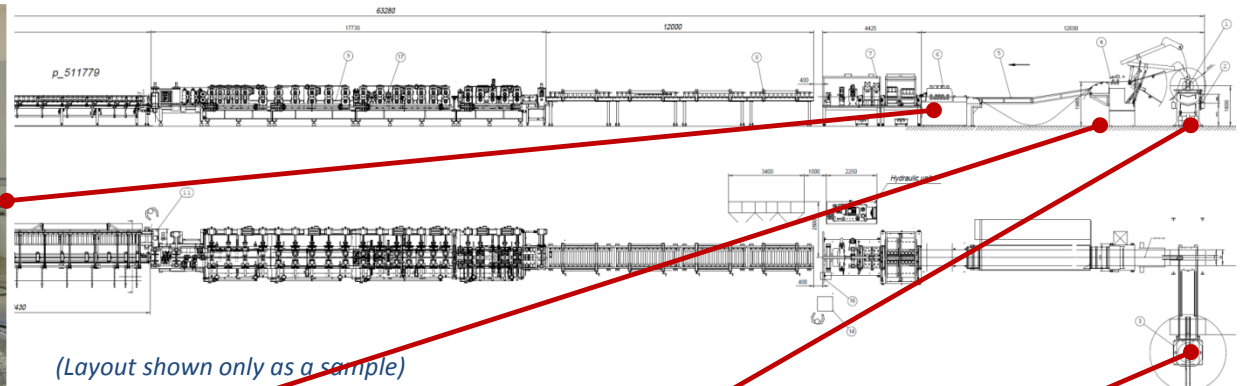


Samesor® PreFab Superior

Coil handling & sheet material feeding



STRAIGHTENING & FEEDING UNIT



PINCH ROLL UNIT



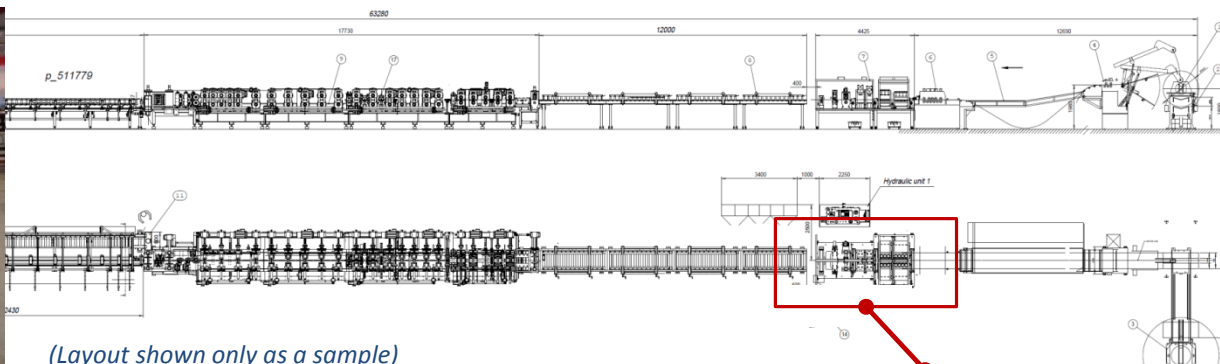
DECOILER & COIL CAR



TURNSTILE

Samesor® PreFab Superior

Flexible & multifunctional sheet working



(Layout shown only as a sample)

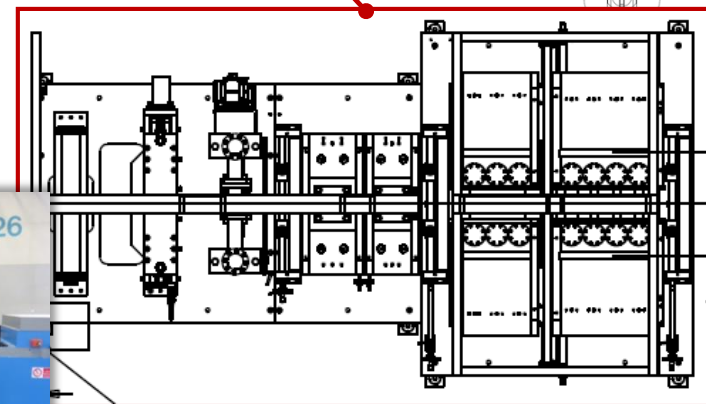
Extensive variety of sheet working tools

Tools for **hole perforation** (e.g: Ø12, Ø14, Ø18, Ø22)

Tools for **slot holes** and **through holes**

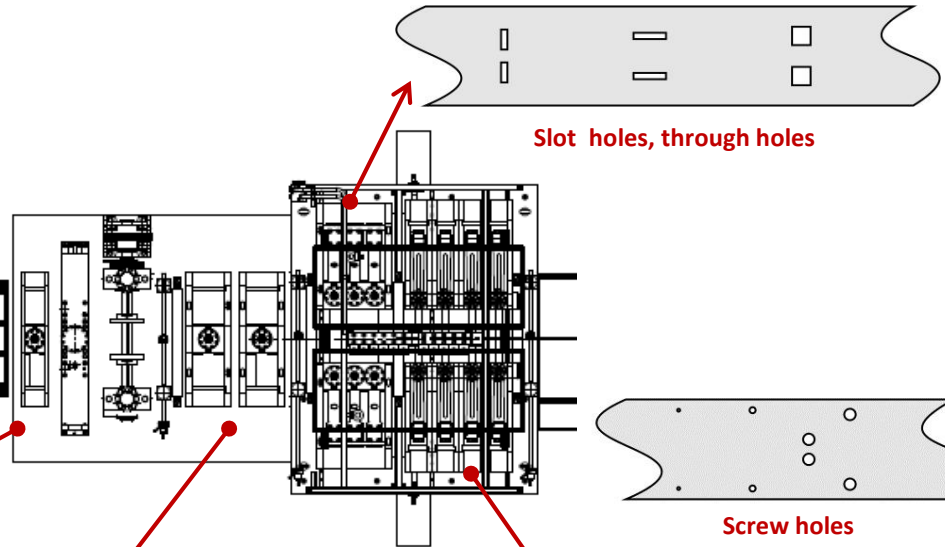
Tools for different **tab detailing** and **drainage hole**

As an option: tools for **screw cups** (male/female) and **rounded head** detailing

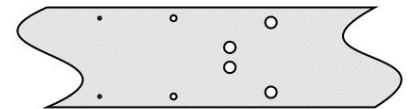


Samesor® PreFab Superior

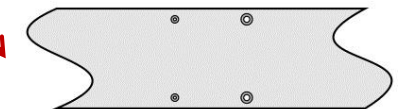
Flexible & multifunctional sheet working



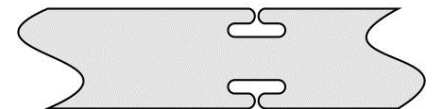
Slot holes, through holes



Screw holes



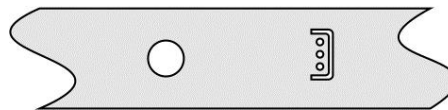
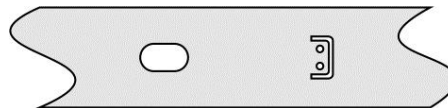
Fixing screw cups; male/female
(option)



Rounded head detailing
(option)



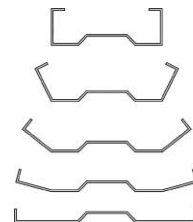
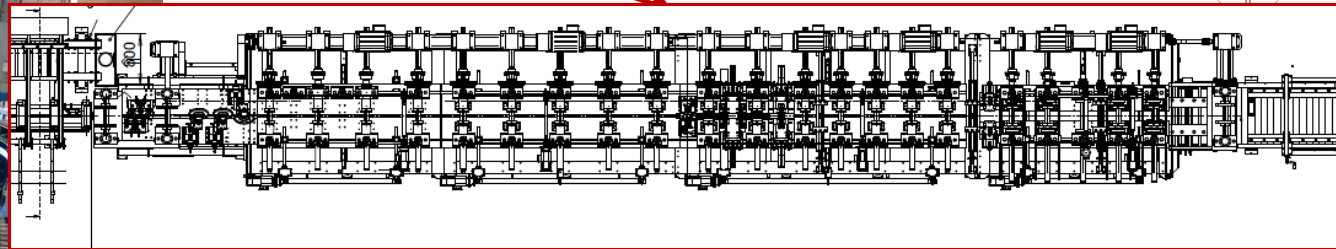
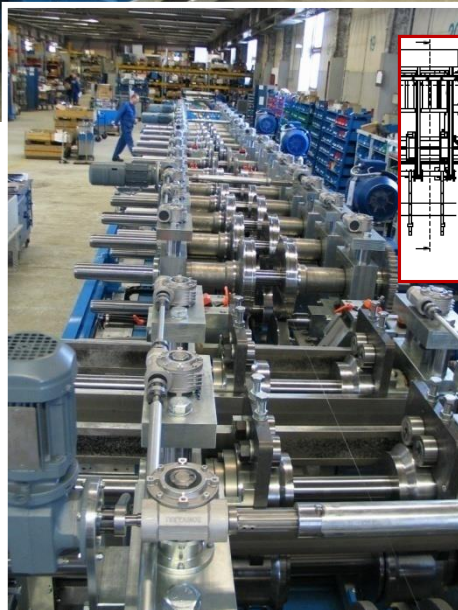
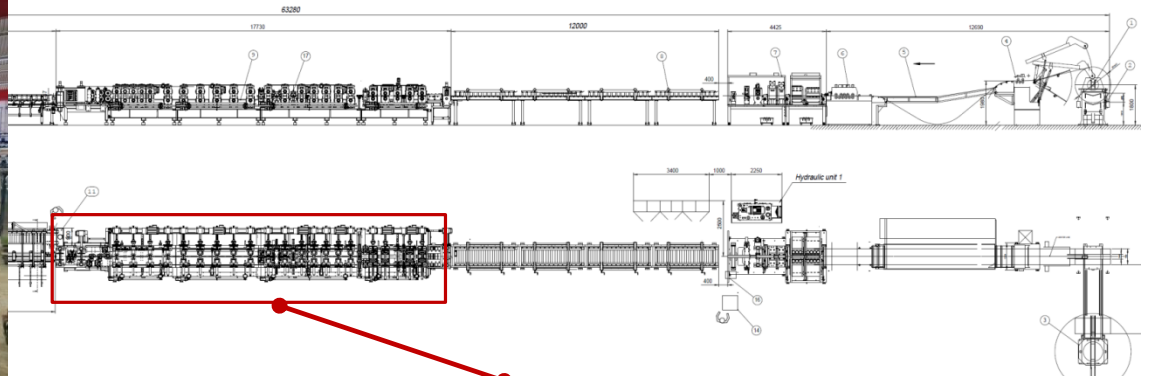
Cutting



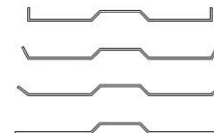
Drainage holes, detailing

Samesor® PreFab Superior

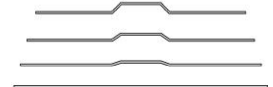
Rollforming with 3 automated forming modules



FLANGE FORMING



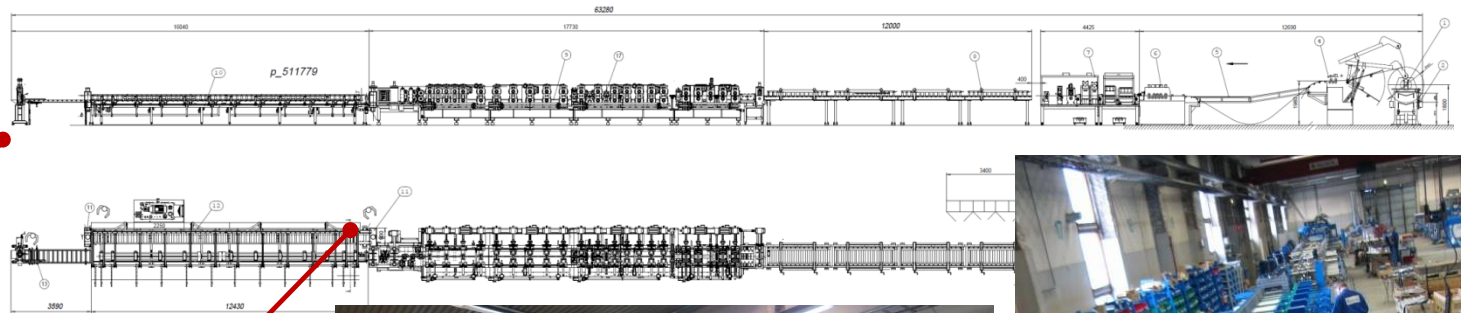
LIP FORMING



SIGMA MID FORMING

Samesor® PreFab Superior

Receiving table, partial cutting & end tab bending



**PARTIAL
CUTTING
UNIT**



**END TAB
BENDING
UNIT**



Samesor® PreFab Superior

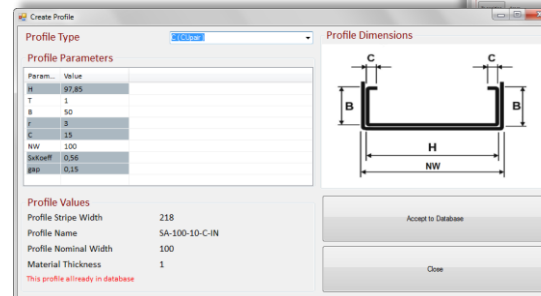
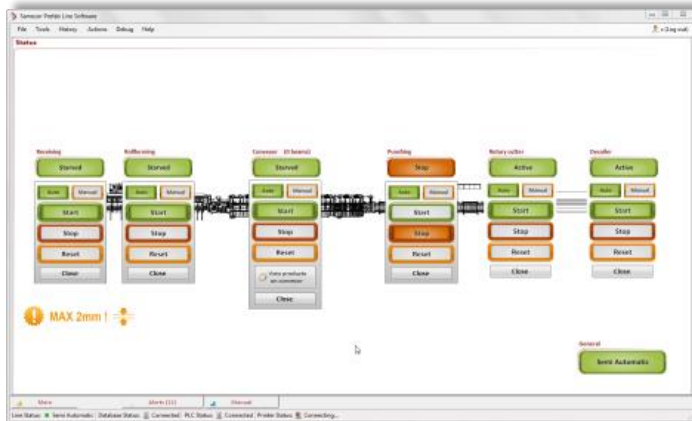
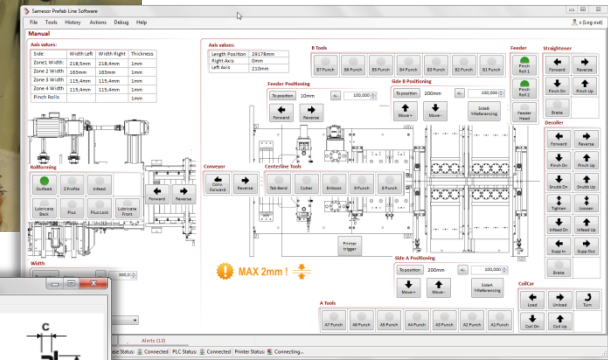
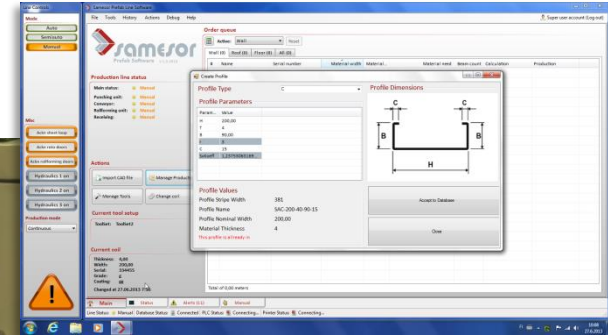
Receiving table with optional devices for stacking & binding



Samesor® PreFab Superior

Line control system (Workstation)

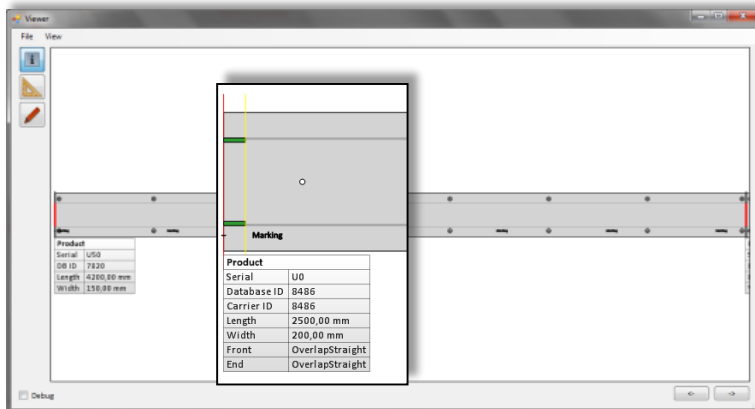
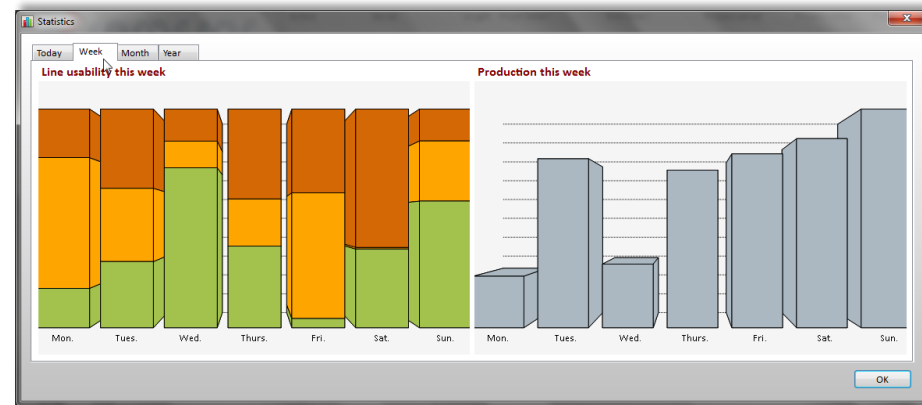
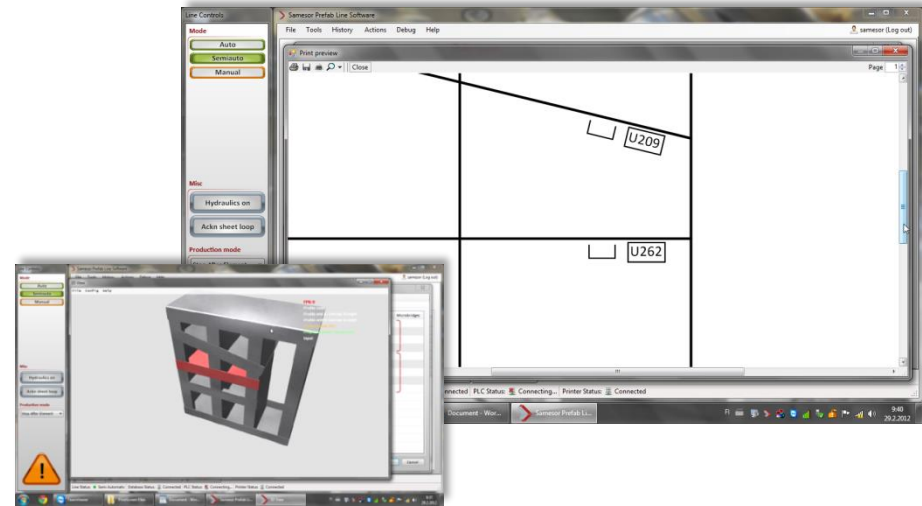
- State-of-the-Art User Interface
 - Flexible order queue handling
 - Varied tools to manage and create products
 - User friendly graphic screens for device control. Devices are managed easily as a modules
 - Remote service



Samesor® PreFab Superior

Line control system (Workstation)

- Advanced tools to view products and production, e.g.:
 - Strip view to check perforations
 - 3D view to explore element
 - Statistics and status tracking
 - Versatile production log monitoring and production data analyzing : e.g. log by profile type / by time variable, data export to Excel, ...





SAMESOR Oy

P.O.BOX 1406 (Mastotie 1)
FI-70461 KUOPIO
FINLAND

Tel.: +358 20 792 9720

Fax: +358 20 792 9721

www.samesor.com