

SAMESOR PREFAB DYNAMIC ONE



SAMESOR PREFAB DYNAMIC ONE



COMPACT PRODUCTION SOLUTION FOR LIGHT STEEL FRAMING

PREFABRICATED LSF BUILDING, SOME ADVANTAGES

GENERAL BENEFITS

- Most cost-effective low and mid-rise structural material
- Shorter and predictable construction schedule
- Highest strength-to-weight ratio of any building material
- 100% recyclable, 68% industry recycling rate
- Non-combustible: does not burn nor contribute fuel to the spread of a fire
- Inorganic: will not rot, warp, split, crack or creep
- Dimensionally stable: does not expand or contract with moisture content
- Consistent material quality - produced in strict accordance with national standards, no regional variations

BENEFITS TO THE BUILDER

- Lighter than other framing materials
- Non-combustible
- Easy material selection: no need to cull or sort the pile and small punch list
- Saves job-site time with ease of panelization off-site
- Straight walls and square corners
- Less scrap and waste (2% for steel vs. 20% for lumber)
- Consumer perceives steel as better

BENEFITS TO THE CONSUMER

- High strength results in safer structures, less maintenance and slower aging of structure
- Fire safety: doesn't burn or add fuel to the spread of a house fire
- Not vulnerable to termites
- Not vulnerable to any type of fungi or organism, including mold
- Less probability of foundation problems - less weight results in less movement
- Less probability of damage in an earthquake
- Less probability of damage in high winds
- Stronger connections, screwed versus nailed



Source: steel framing.org

SAMESOR PREFAB DYNAMIC ONE

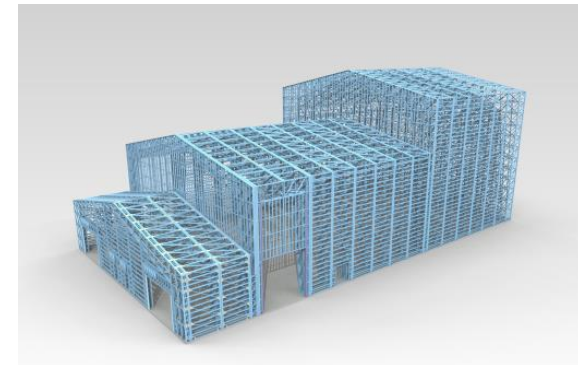
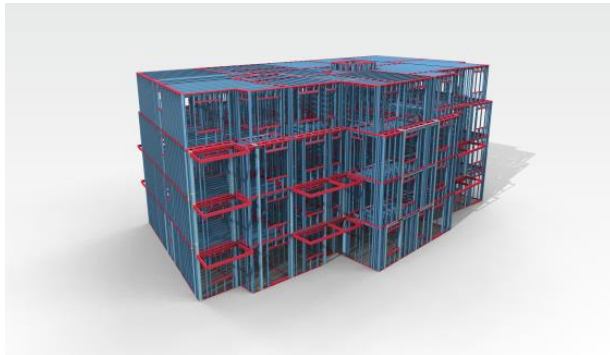


COMPACT PRODUCTION SOLUTION FOR LIGHT STEEL FRAMING

NEW CONCEPT!

Samesor Prefab DYNAMIC^{ONE}: our newest concept for steel frame production. Affordable but yet flexible way to produce high end prefabricated members for different steel framing needs.

A compact package combining **innovative, proven and reliable** sheet metal working, roll forming and control techniques which have been used in the family* of our Prefab Lines for years. For the CAD designing part of Prefab DYNAMIC^{ONE}, world class LSF design software Vertex and Tekla can be connected to the system.



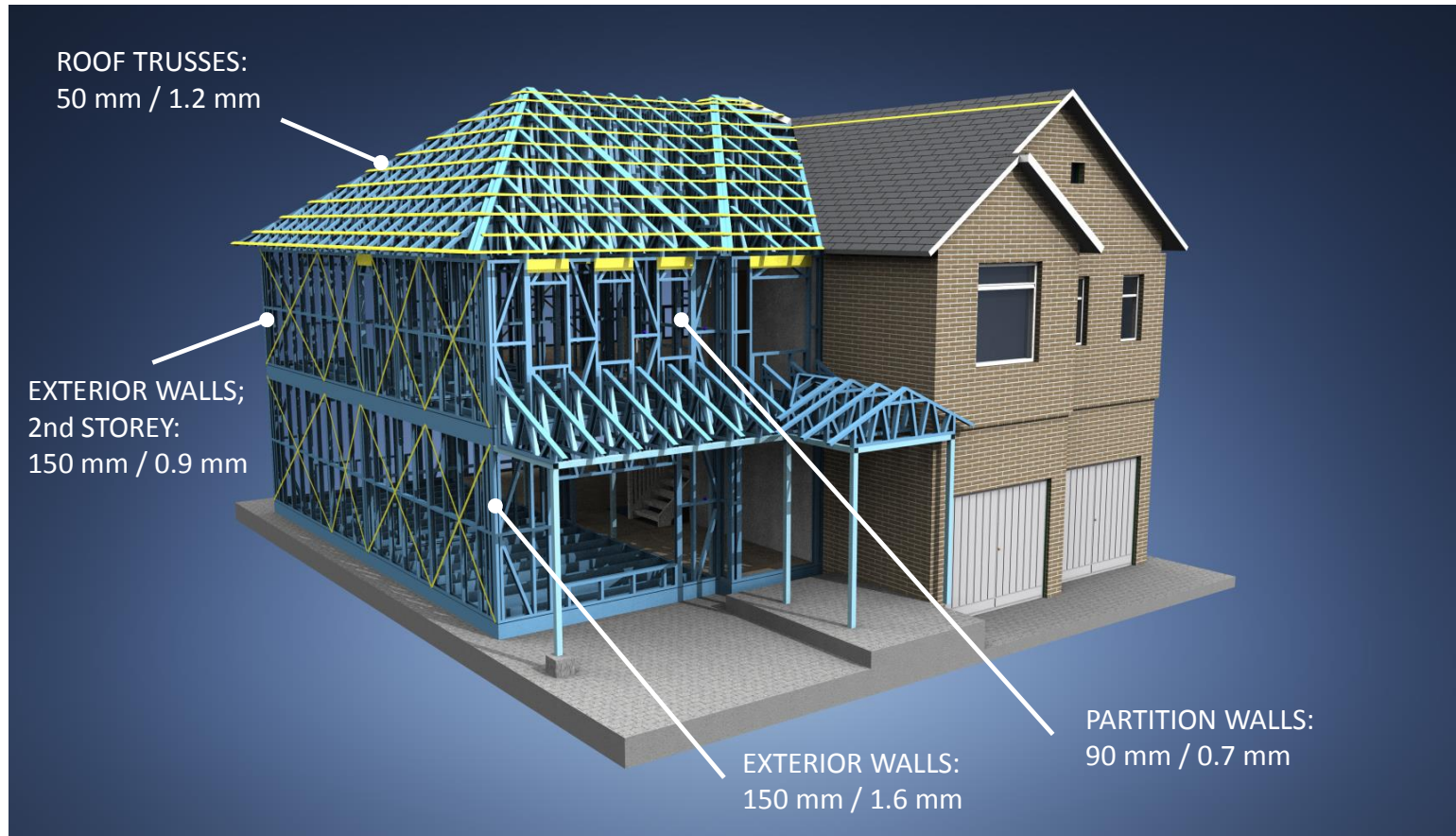
**) The family of Samesor prefab lines (Prefab DYNAMIC, Prefab ADVANCED and Prefab SUPERIOR) offers the best manufacturing solution for all LSF production needs: from containers, affordable residential and modular housings to warehouses, multistory houses up to 8-storeys, commercial constructions and to façade elements.*

SAMESOR PREFAB DYNAMIC ONE



COMPACT PRODUCTION SOLUTION FOR LIGHT STEEL FRAMING

LIGHT STEEL FRAMING: USAGE OF PROFILES (example)



SAMESOR PREFAB DYNAMIC ONE

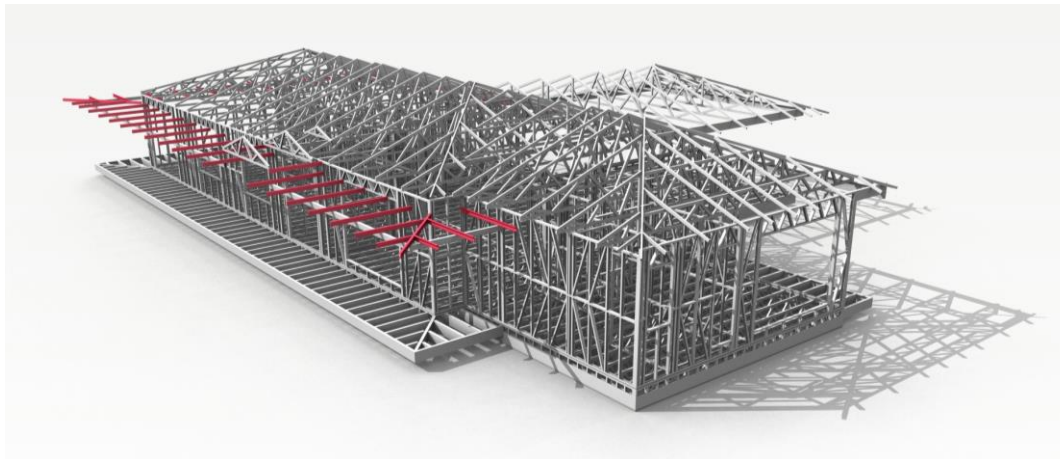
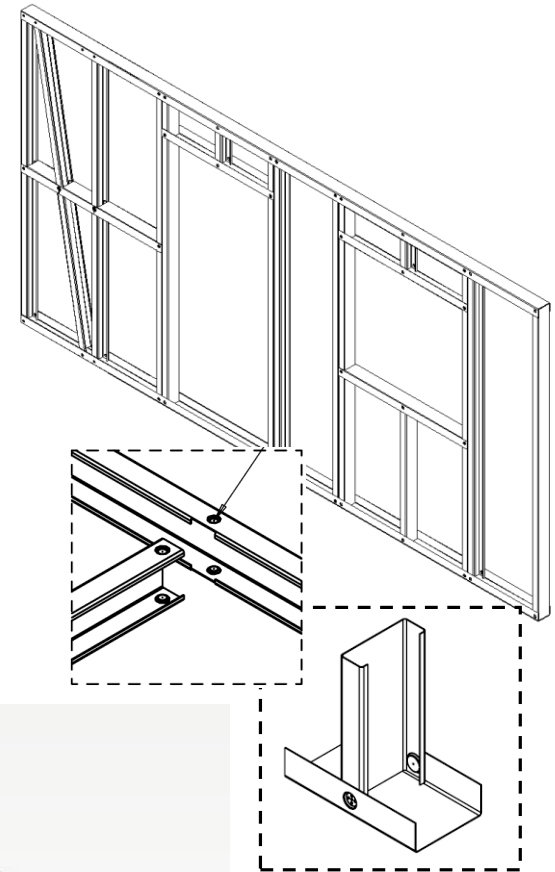


COMPACT PRODUCTION SOLUTION FOR LIGHT STEEL FRAMING

DEDICATED FOR YOUR FRAMES

Samesor Prefab DYNAMIC^{ONE}:

- Studs and tracks for steel frame elements
- Profile web width range: 50 – 150 mm
- Steel thickness range is 0.7 – 1.6 mm
- One chosen profile width at time (*changeable for another profile width manually by bushing/spacers*)
- 3D modelling integration and CAD-CAM production

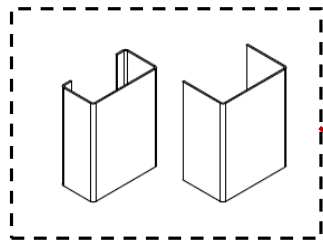


SAMESOR PREFAB DYNAMIC ONE

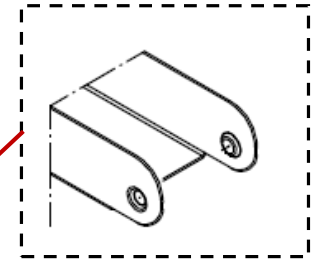


COMPACT PRODUCTION SOLUTION FOR LIGHT STEEL FRAMING

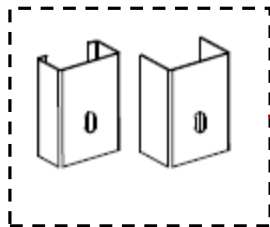
CONNECTION DETAILING EXAMPLES



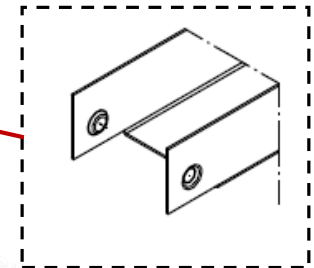
Straight head



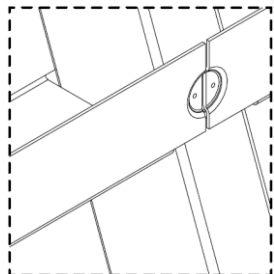
Rounded head



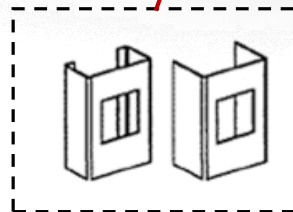
Cable hole



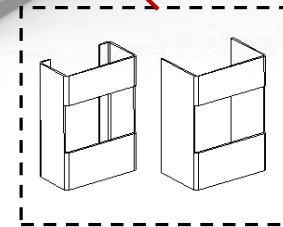
Overlap head straight



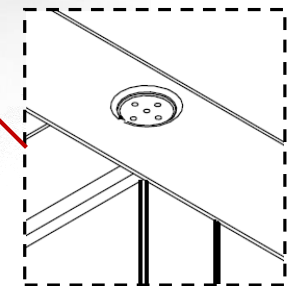
Lateral bracing



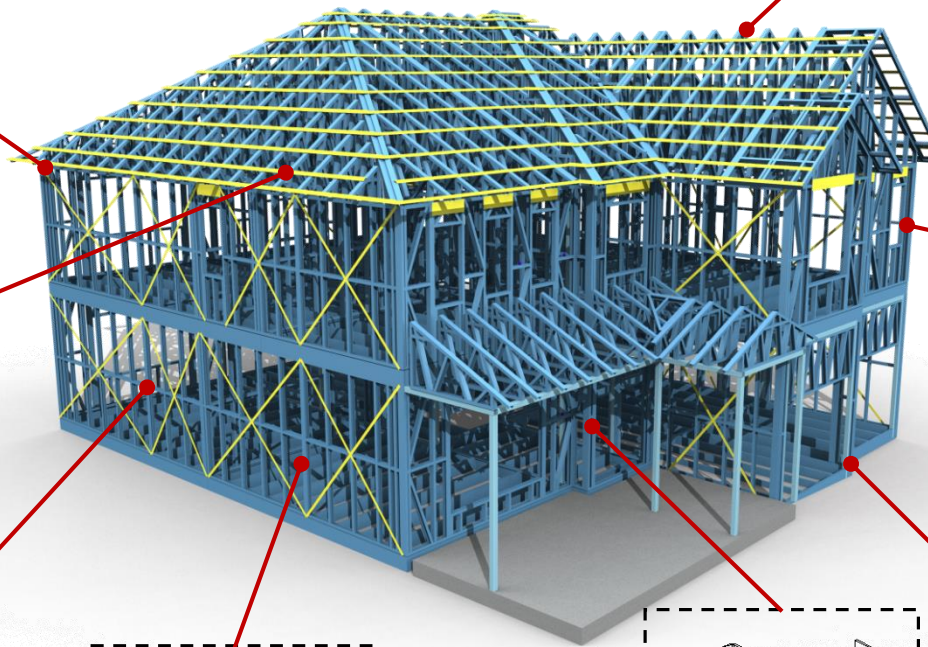
Thru hole



Web opening



1-screw / 4-screw cups (male / female)



SAMESOR PREFAB DYNAMIC ONE



COMPACT PRODUCTION SOLUTION FOR LIGHT STEEL FRAMING

SAMESOR PREFAB DYNAMIC ONE

- Single unit construction in compact size including integrated roll forming, sheet metal working, control cabinet and hydraulics
- User-friendly design allowing easy access
- Footprint: ~ 10x2 m, weight: ~ 7500 kg



SAMESOR PREFAB DYNAMIC ONE



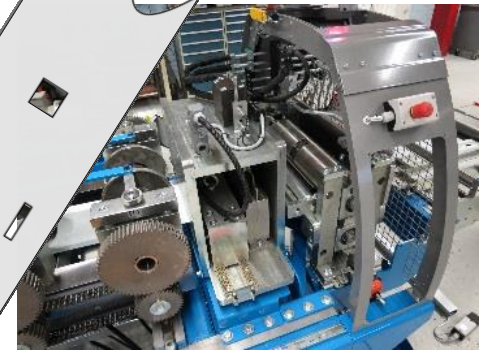
COMPACT PRODUCTION SOLUTION FOR LIGHT STEEL FRAMING

TOOLING for punching:

- web area openings
- flange area openings
- flange area cutting
- connection detailing
- round head detailing

TOOLING for cutting and for stud/track fitting:

- sheet cutting
 - Sheet cutting for coil change
- profile cutting
- stud/track fitting



SAMESOR PREFAB DYNAMIC ONE



COMPACT PRODUCTION SOLUTION FOR LIGHT STEEL FRAMING

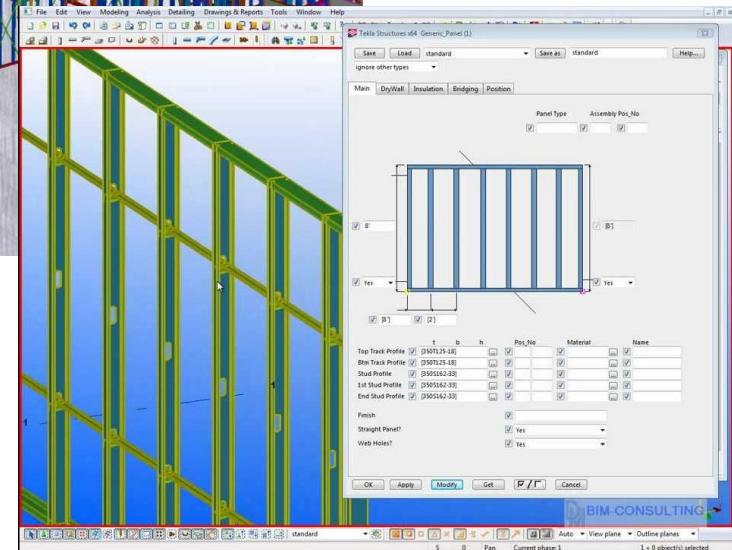
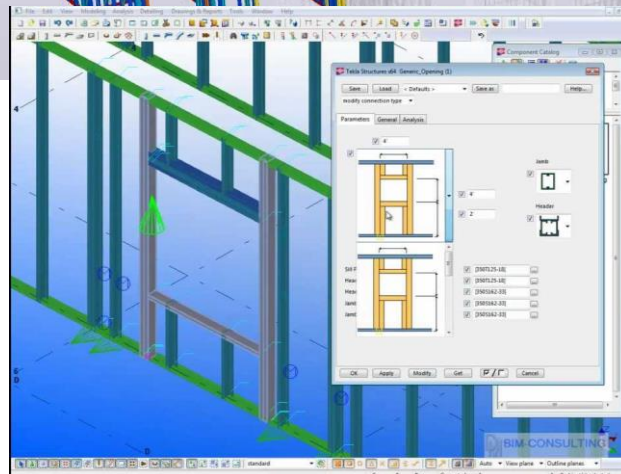
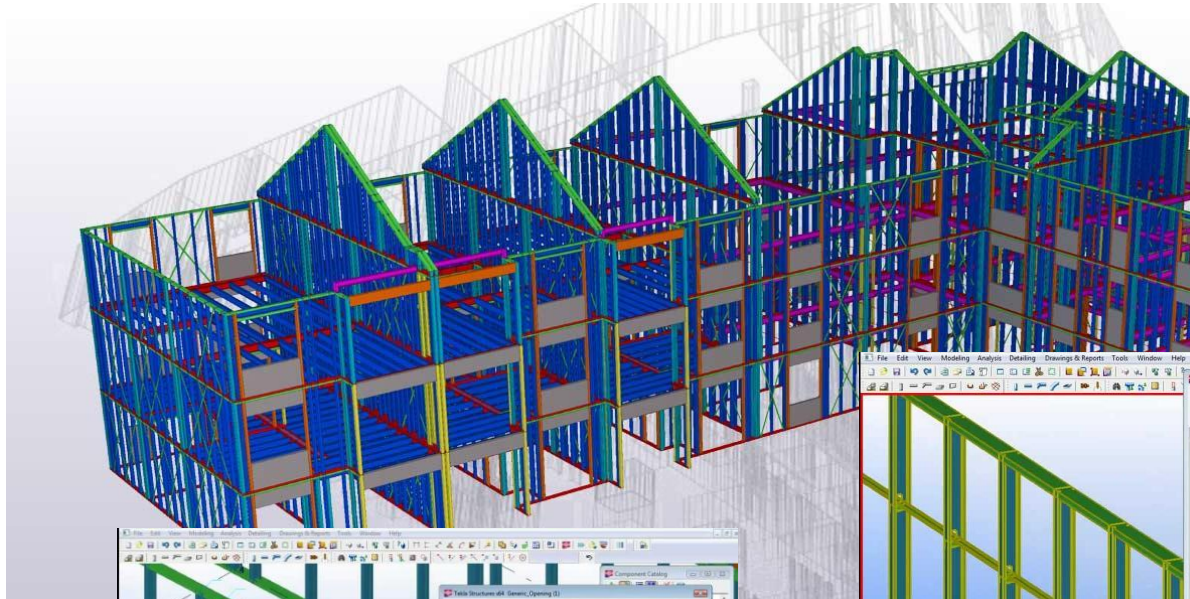


SAMESOR PREFAB DYNAMIC ONE



COMPACT PRODUCTION SOLUTION FOR LIGHT STEEL FRAMING

FROM DESIGN TO MANUFACTURING



SAMESOR PREFAB DYNAMIC ONE



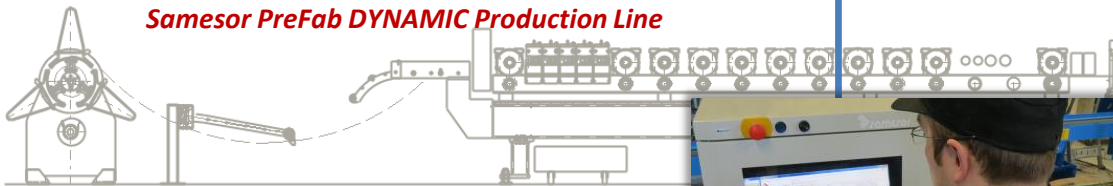
COMPACT PRODUCTION SOLUTION FOR LIGHT STEEL FRAMING

FROM DESIGN TO MANUFACTURING



Design engineer workstation

SAMESOR CAD - CAM
3D Modelling Software running on Customer's Workstation.
Integration to multiple CAD software (Tekla, Vertex)

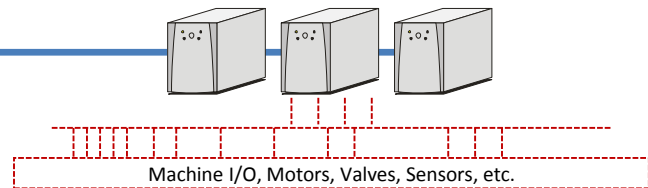


Samesor PreFab DYNAMIC Production Line

UNIT CONTROL
PLC Control to control machine functions



LINE CONTROL INTERFACE
Graphical user interface.
Line control / Order queue handling / Interfacing to design workstation / Data storing



SAMESOR PREFAB DYNAMIC ONE

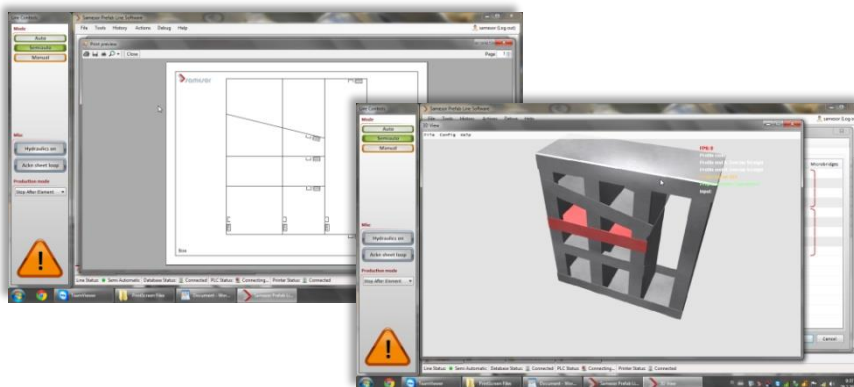
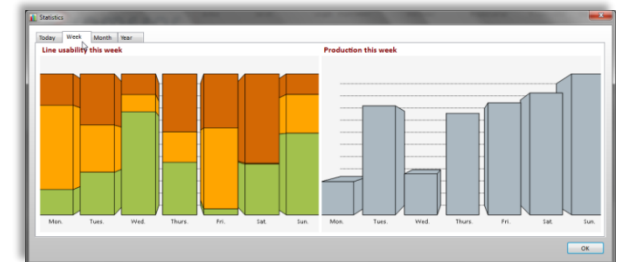
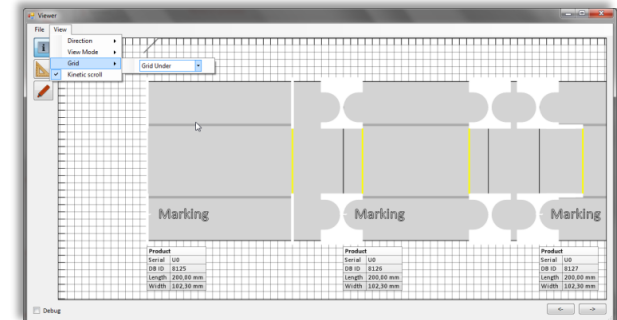
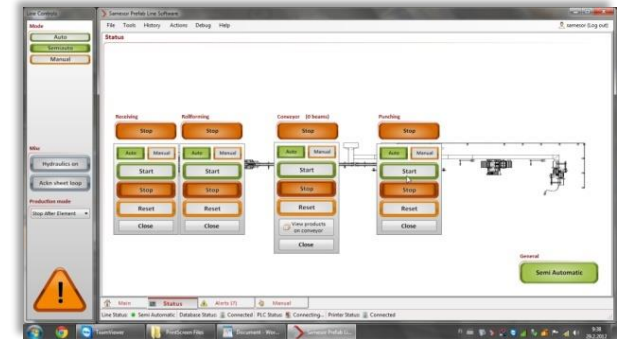


COMPACT PRODUCTION SOLUTION FOR LIGHT STEEL FRAMING

LINE CONTROL SYSTEM

Integration to multiple CAD software (Tekla, Vertex)

- State-of-the-Art User Interface
- Flexible order queue handling. Varied tools to manage and create products
- User friendly graphic screens for device control
- Advanced tools to view products and production: e.g. strip view to check perforations, 3D-view to explore element, versatile status





SAMESOR Oy

P.O.BOX 1406 (Mastotie 1)

FI-70461 KUOPIO

FINLAND

www.samesor.com