



SAMESOR PURLIN SUPERIOR

Overview of the line

+50
years
OF EXPERIENCE


1000
delivered
MACHINES


60
export
COUNTRIES

SAMESOR PURLIN SUPERIOR

SAMESOR PURLIN SUPERIOR: HEAVY-DUTY MACHINE FOR PURLIN PRODUCTION

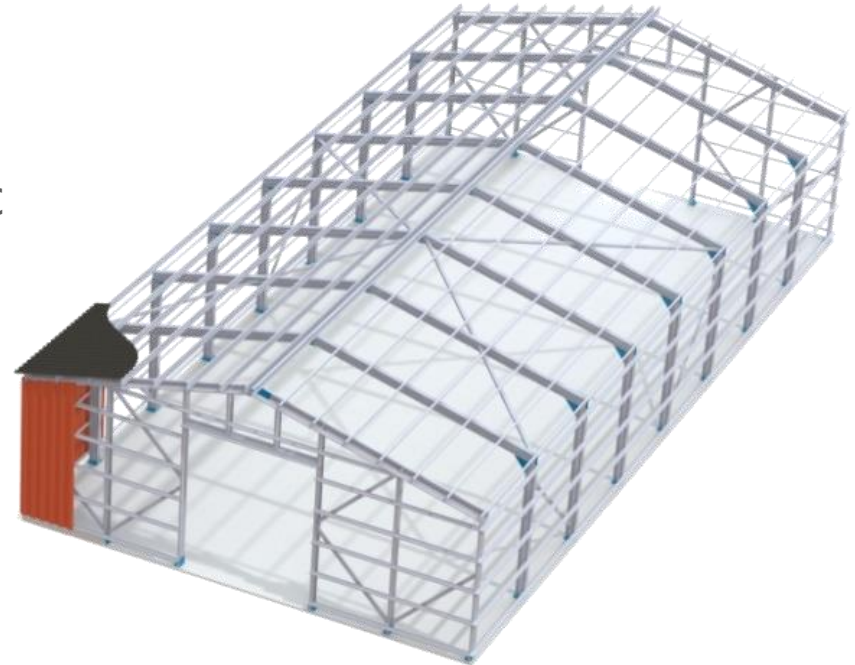
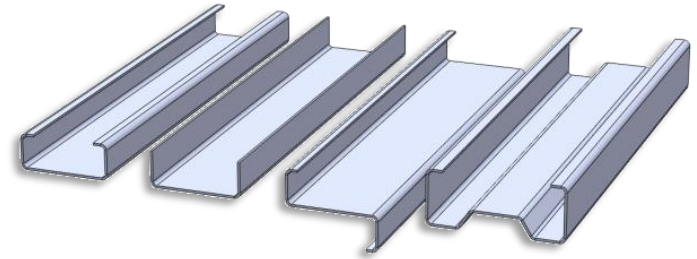


POWERIZING PURLIN PRODUCTION

SAMESOR PURLIN SUPERIOR

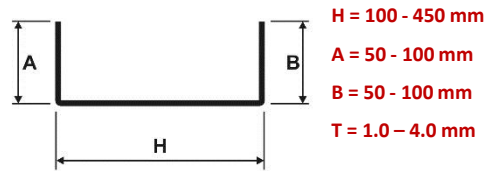
MEMBERS FOR PRIMARY AND SECONDARY STRUCTURES IN INDUSTRIAL BUILDINGS

- C, U AND Z PROFILES (*SIGMA PROFILE AS OPTION*).
- CUSTOMIZABLE PUNCHING CAPABILITY FOR DETAILING
- AUTOMATION LEVEL ACCORDING TO CUSTOMER NEEDS
- LINE CONFIGURATIONS: for **CUT-TO-LENGTH DRIVE**, for **CONTINUOUS SHEET DRIVE**
- CONTROL SYSTEM CONFIGURATIONS: with **PC CONTROL**, with **PLC CONTROL**

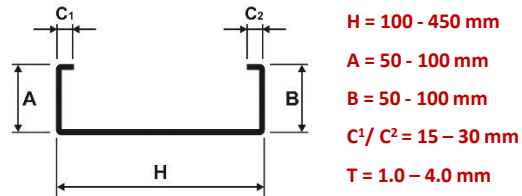


SAMESOR PURLIN SUPERIOR

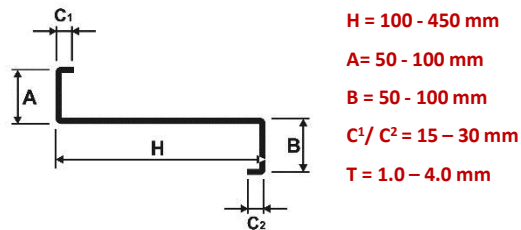
PROFILE RANGE OVERVIEW (*in general*)



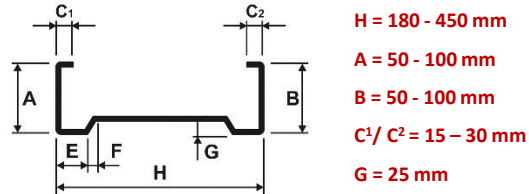
U-PROFILE



C-PROFILE



Z-PROFILE

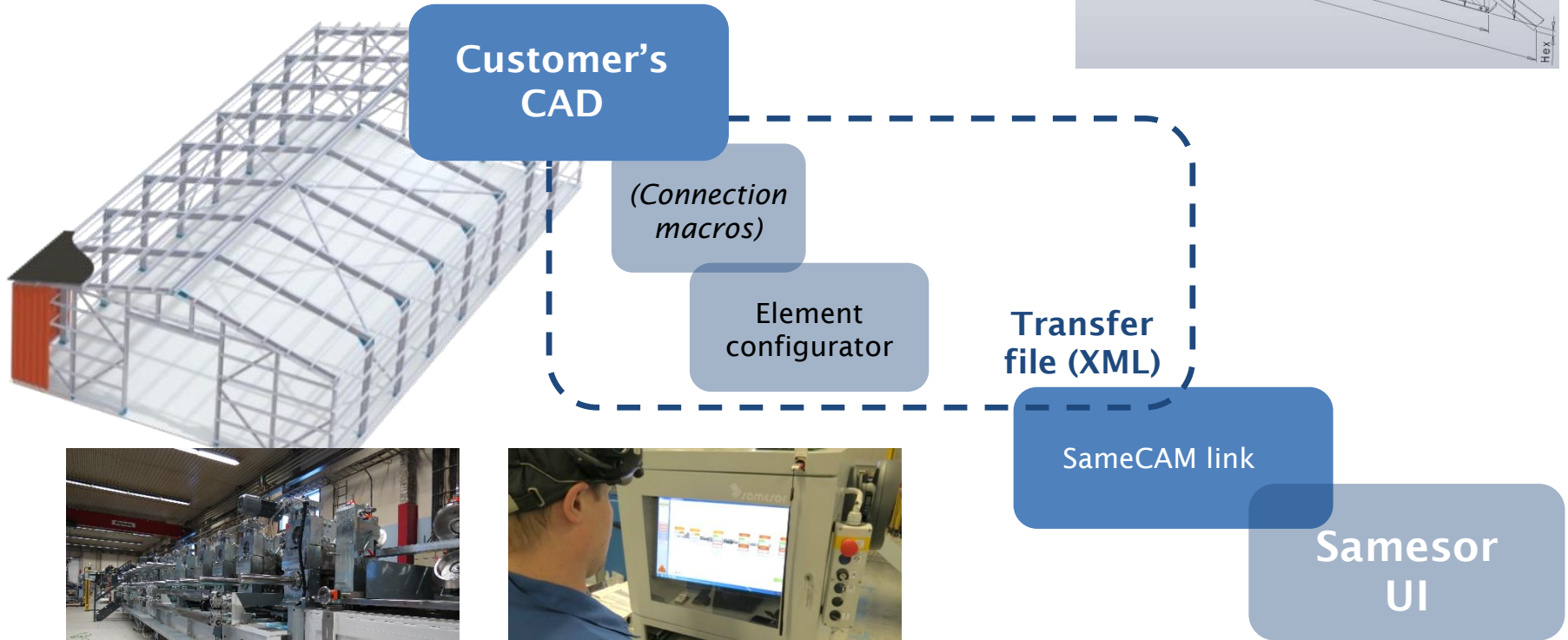
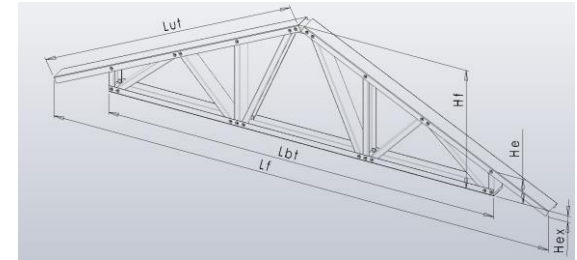


(OPTION) SIGMA PROFILE



SAMESOR PURLIN SUPERIOR

FROM DESIGN TO PRODUCTION (PC control versions)



UNIT CONTROL (PLC)
Machine functions: machine I/O, motors, valves, sensors etc.

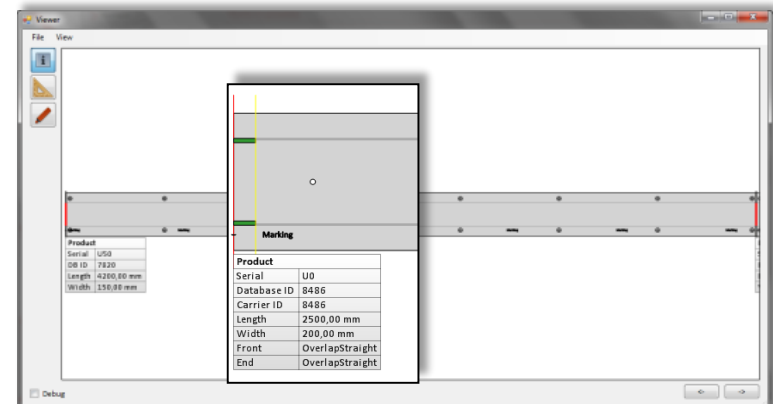
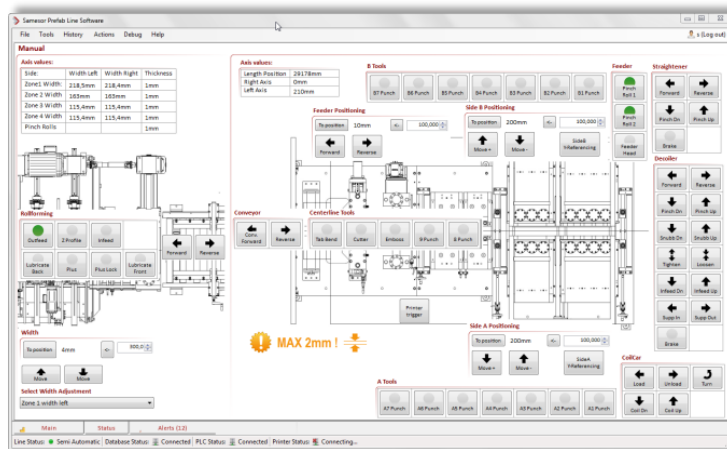
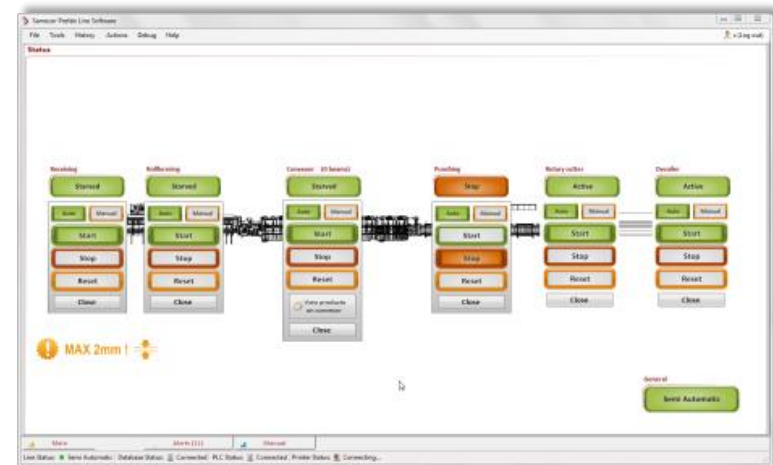


LINE CONTROL WORKSTATION (PC)
Line control, order queue handling, interfacing, data storing etc.

SAMESOR PURLIN SUPERIOR

WORKSTATION (Samesor UI)

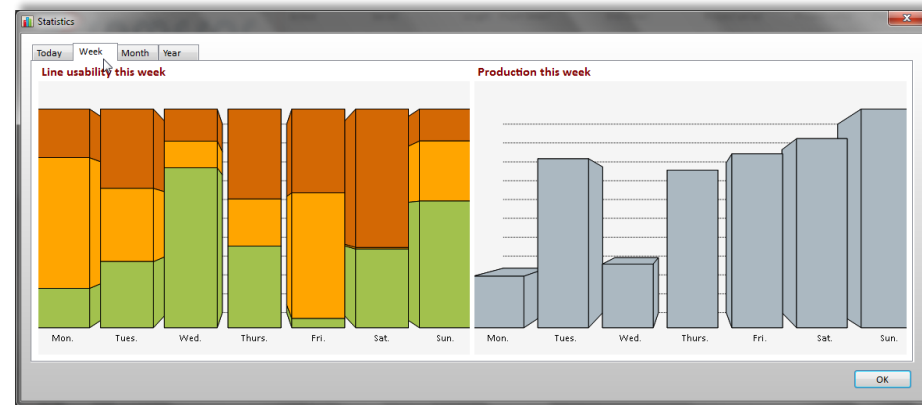
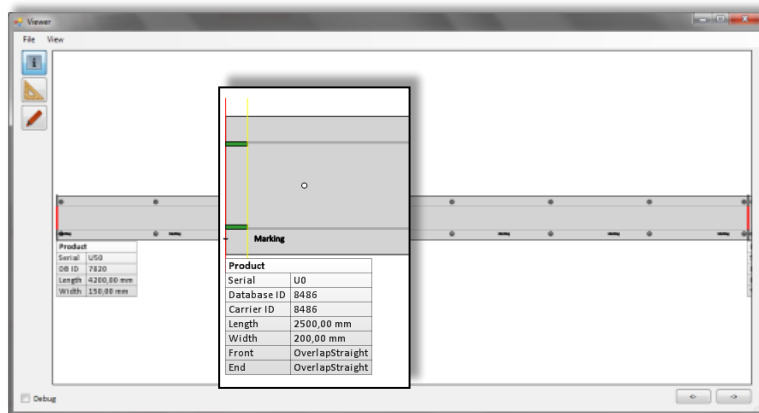
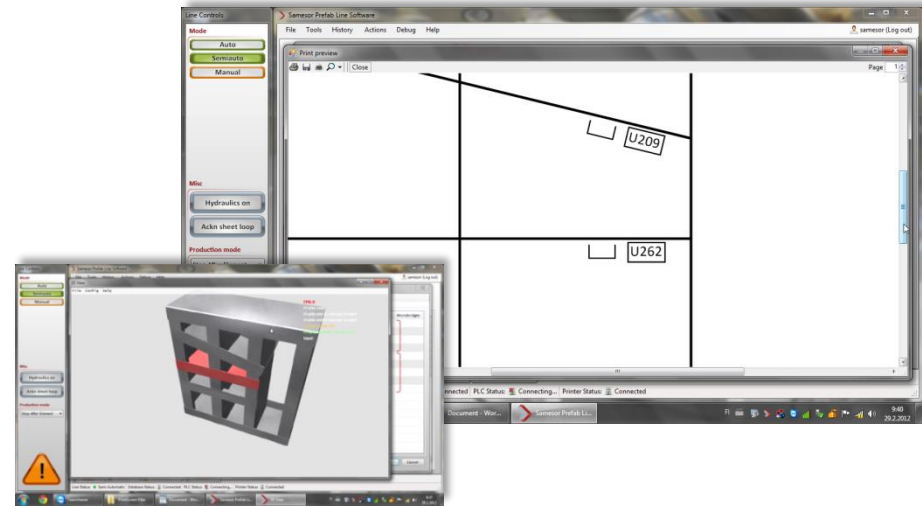
- STATE-OF-THE-ART USER INTERFACE
 - EFFICIENT ORDER QUEUE HANDLING
 - VARIED TOOLS TO MANAGE AND CREATE PRODUCTS
 - USER FRIENDLY GRAPHIC SCREENS FOR DEVICE CONTROL
 - REMOTE SERVICE



SAMESOR PURLIN SUPERIOR

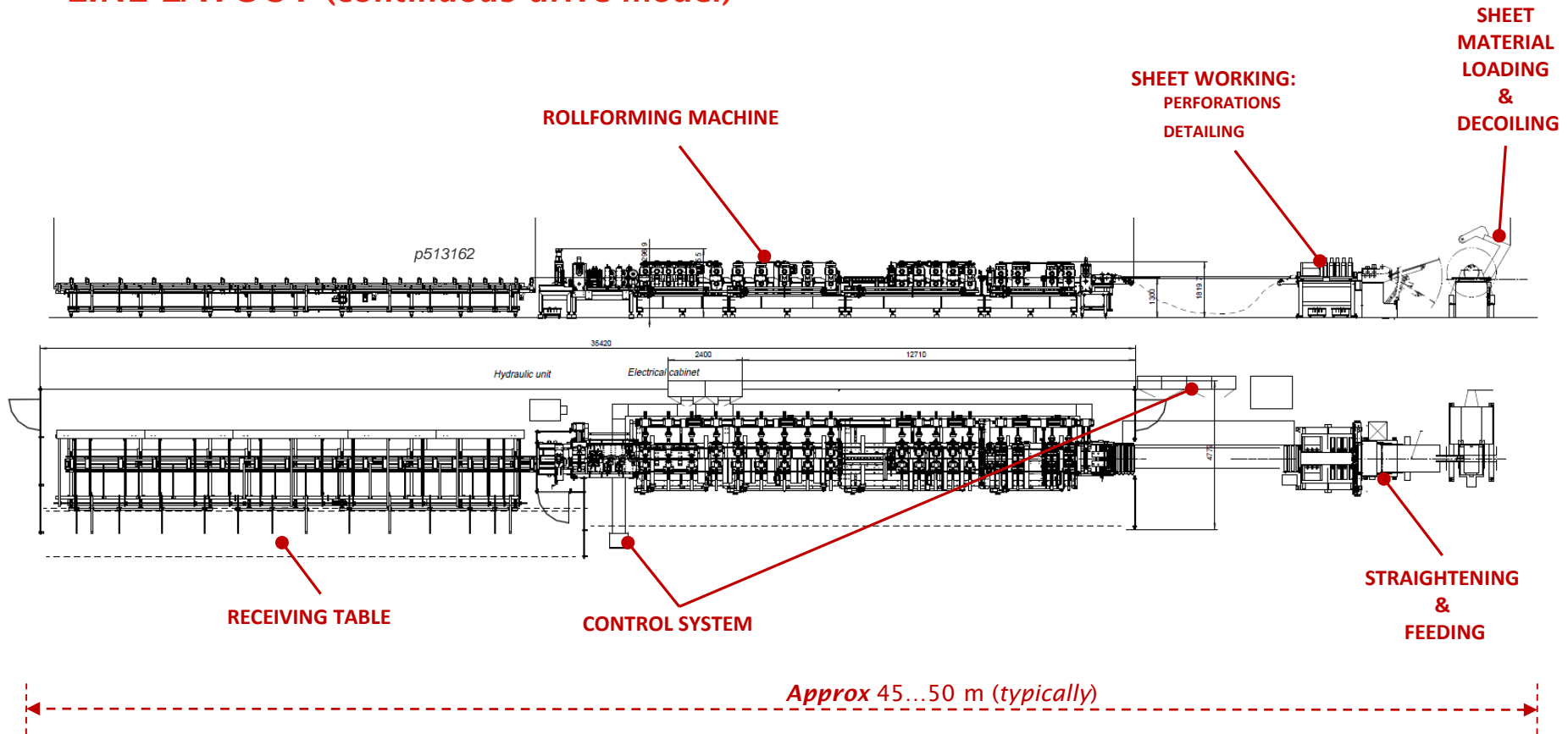
WORKSTATION (Samesor UI)

- ADVANCED TOOLS TO VIEW PRODUCTS AND PRODUCTION, E.G.:
 - STRIP VIEW TO CHECK PERFORATIONS
 - 3D VIEW TO EXPLORE ELEMENT
 - STATISTICS AND STATUS TRACKING
 - VERSATILE PRODUCTION LOG MONITORING AND PRODUCTION DATA ANALYZING : E.G. LOG BY PROFILE TYPE / BY TIME VARIABLE, DATA EXPORT TO EXCEL, ...



SAMESOR PURLIN SUPERIOR

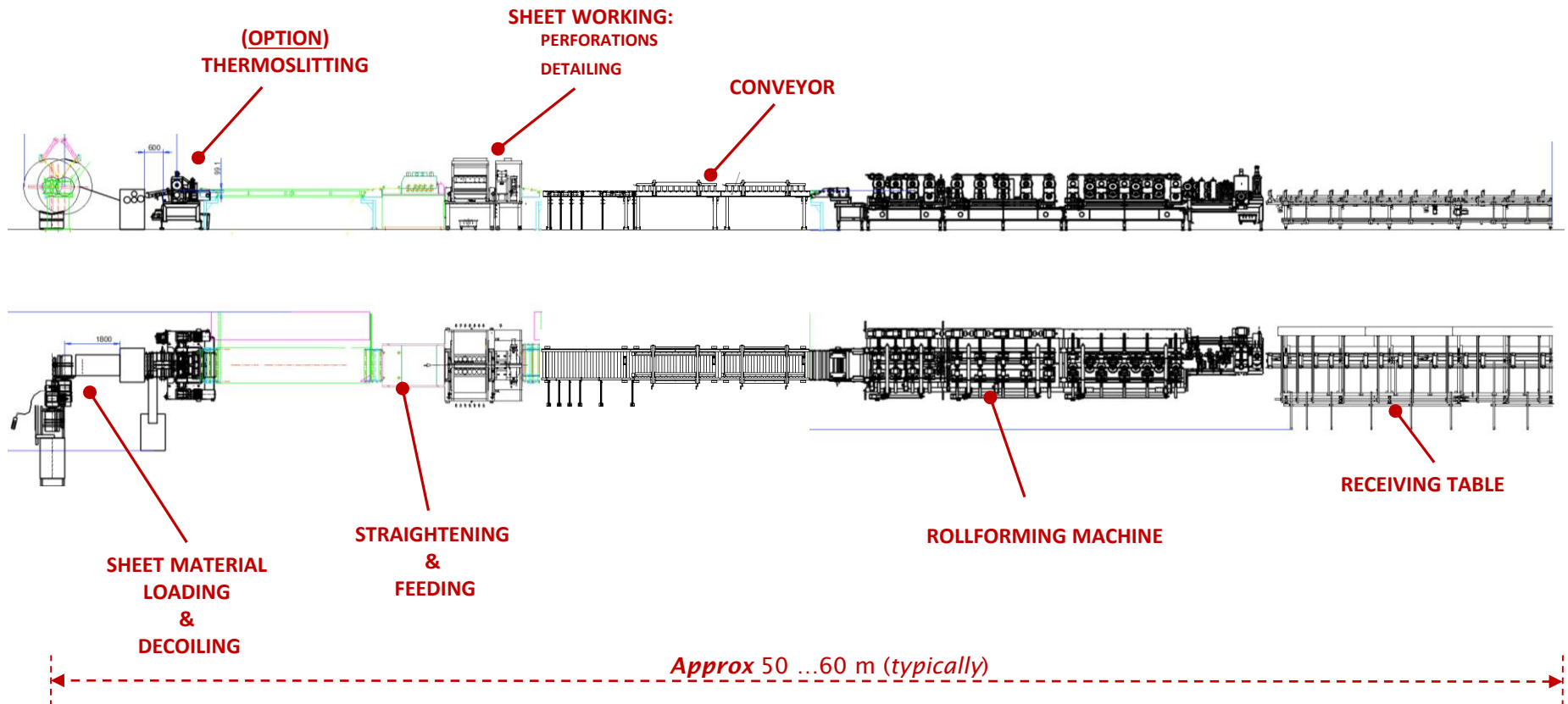
LINE LAYOUT (continuous drive model)



Layout shown only as a SAMPLE

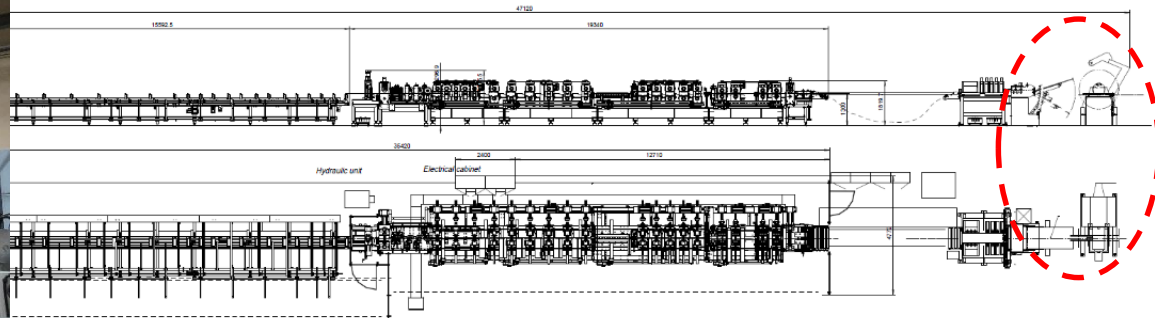
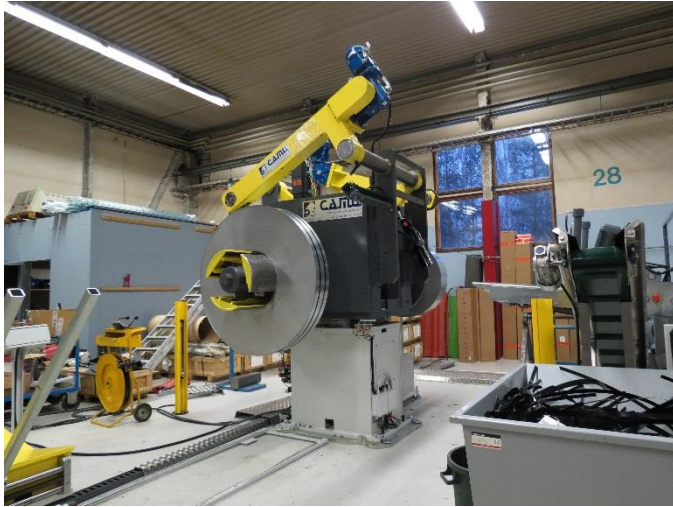
SAMESOR PURLIN SUPERIOR

LINE LAYOUT (cut-to-length drive model)

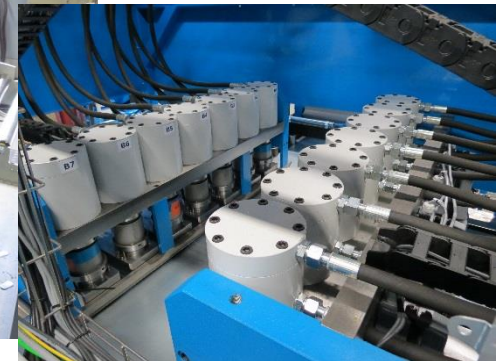
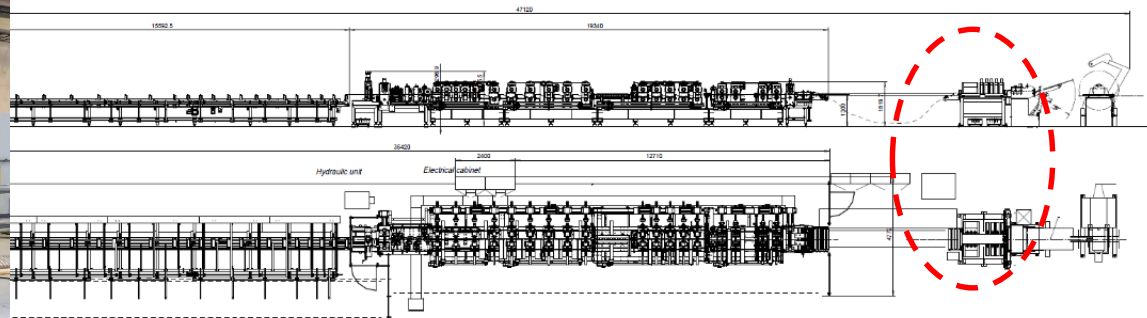
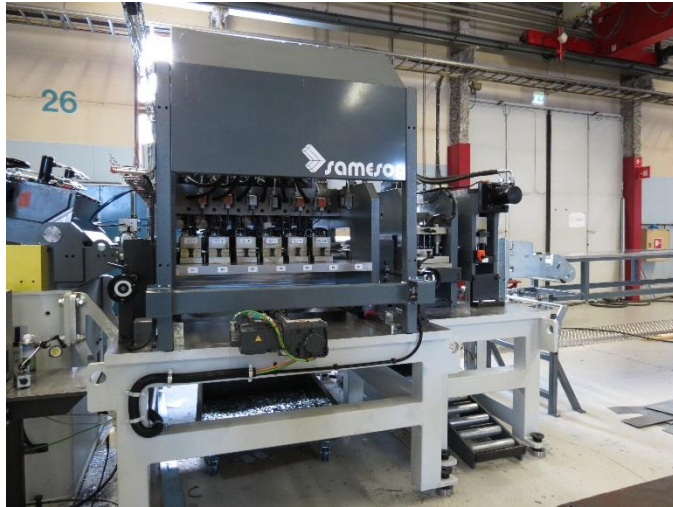


Layout shown only as a SAMPLE

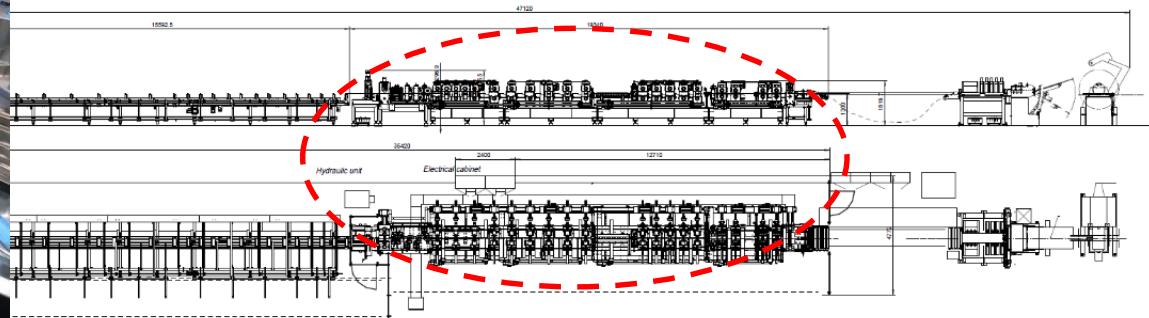
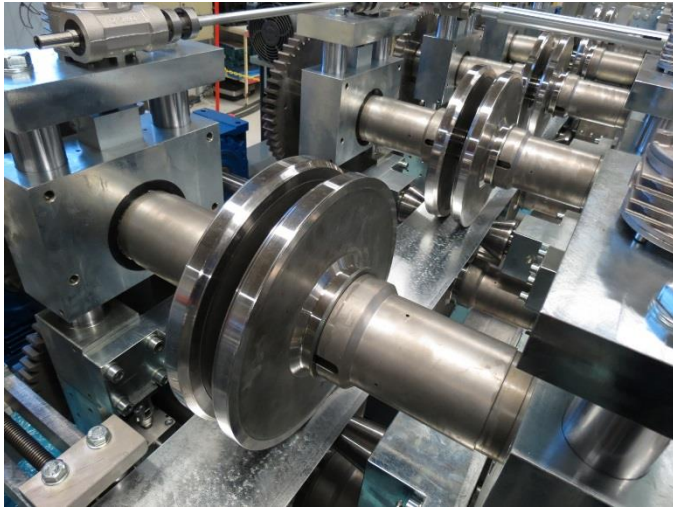
SAMESOR PURLIN SUPERIOR



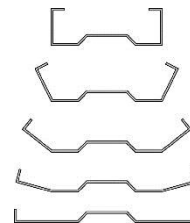
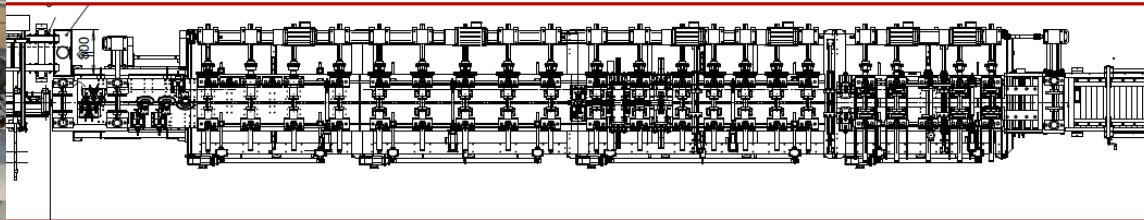
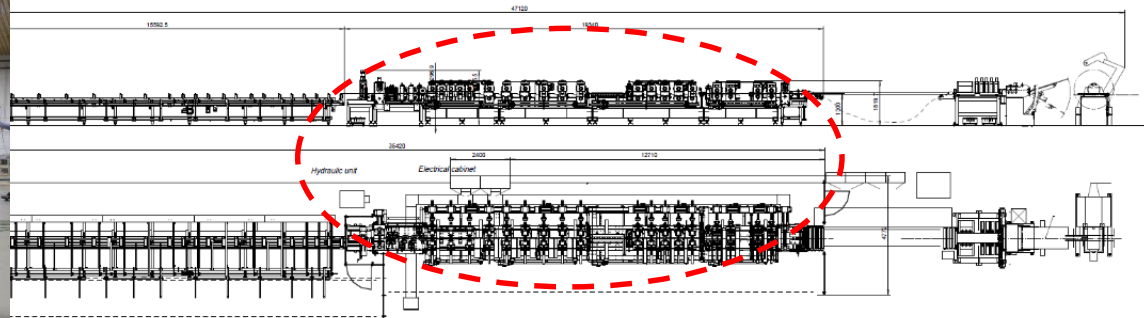
SAMESOR PURLIN SUPERIOR



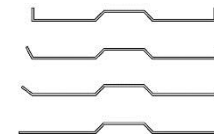
SAMESOR PURLIN SUPERIOR



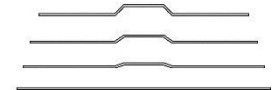
SAMESOR PURLIN SUPERIOR



FLANGE FORMING



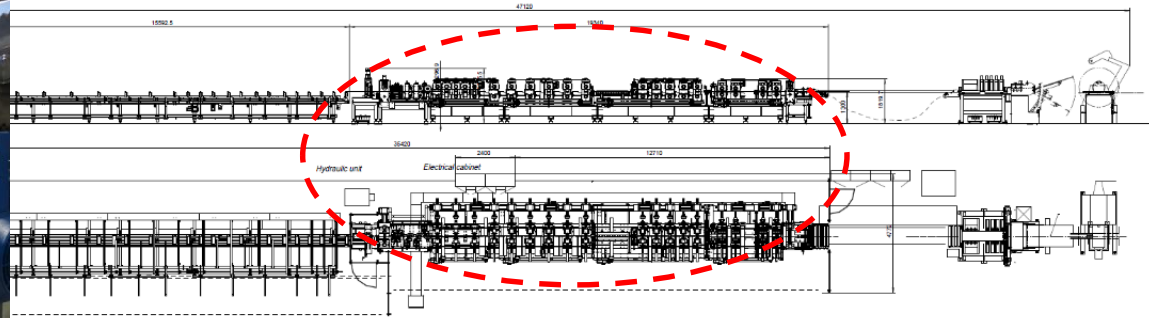
LIP FORMING



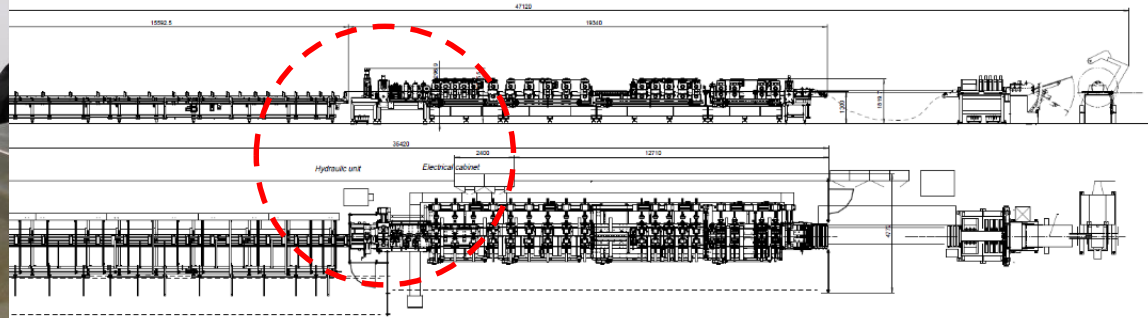
SIGMA MID FORMING

Pictures are shown for giving an overview only

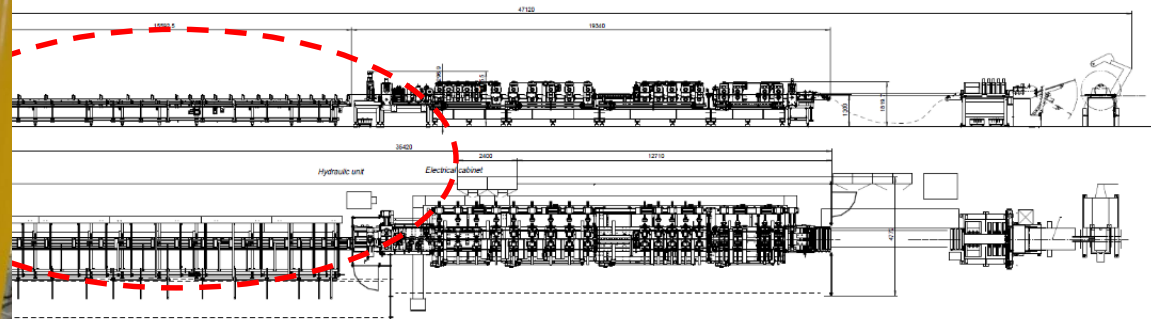
SAMESOR PURLIN SUPERIOR



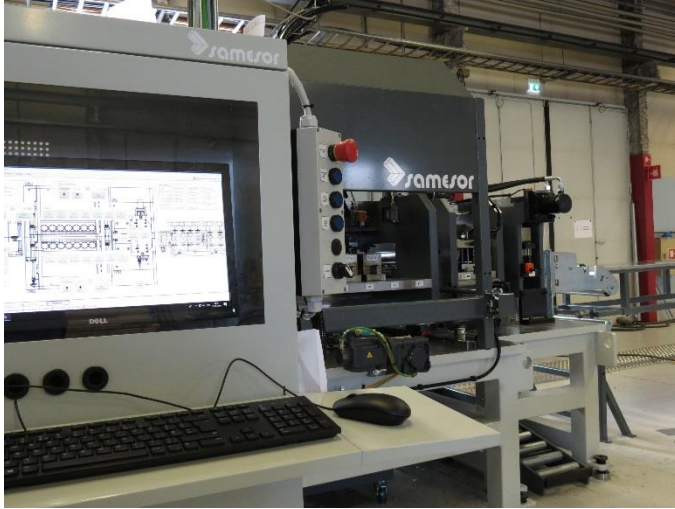
SAMESOR PURLIN SUPERIOR



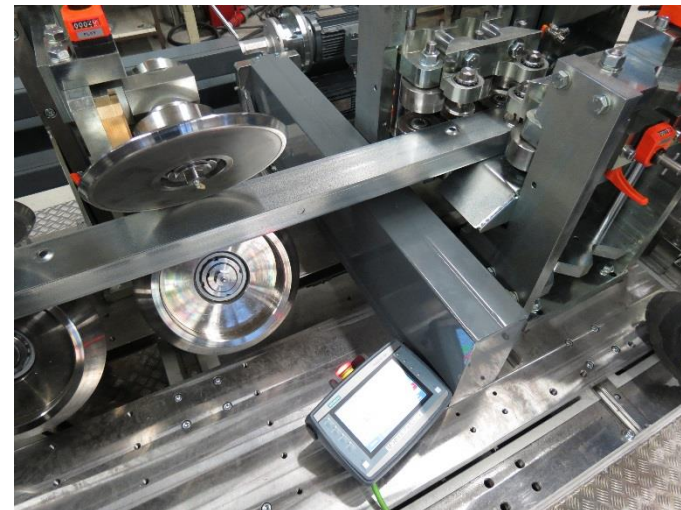
SAMESOR PURLIN SUPERIOR



SAMESOR PURLIN SUPERIOR



SAMESOR PURLIN SUPERIOR



SAMESOR PURLIN SUPERIOR

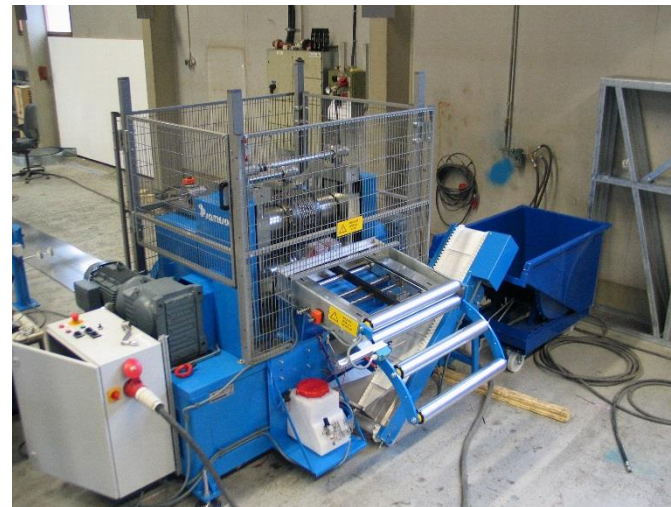


OPTION: STACKING and PILING SYSTEM



SAMESOR PURLIN SUPERIOR

OPTION: THERMOSLITTING MACHINE





samesor

THANK YOU FOR YOUR INTEREST!

MORE INFORMATION ABOUT US:

www.samesor.com

SAMESOR OY, P.O.BOX 1406 (MASTOTIE 1), FI-70461 KUOPIO, FINLAND